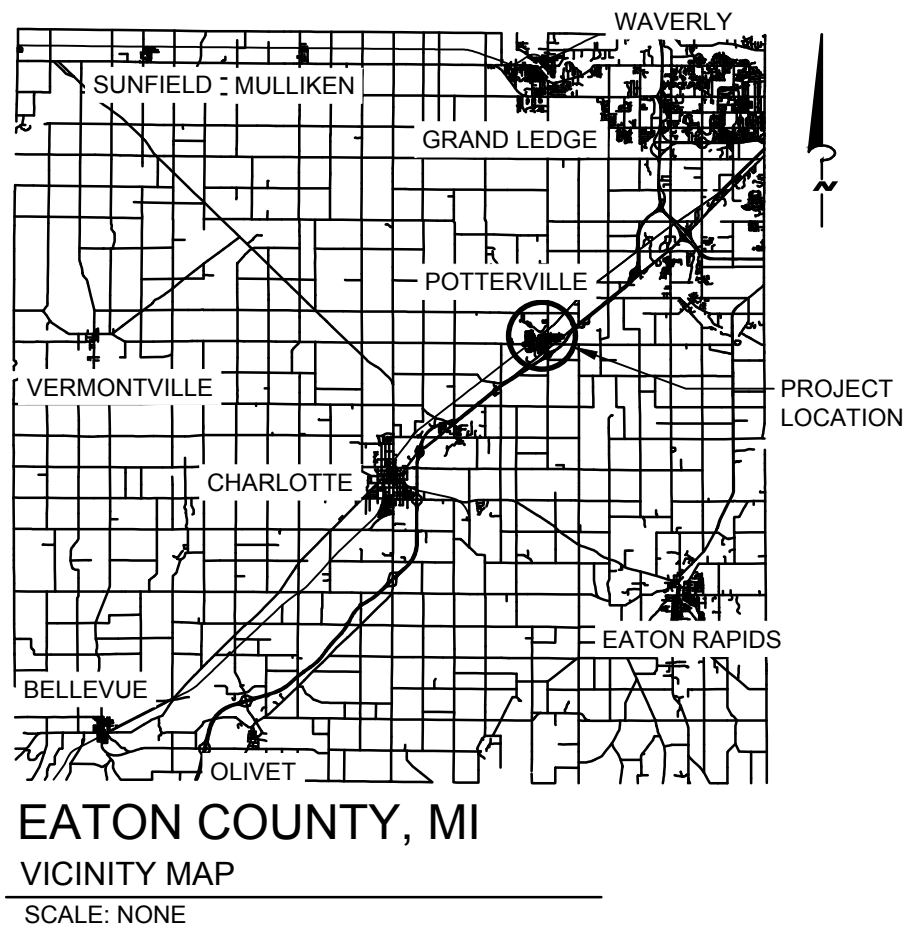


CITY OF POTTERVILLE

IN COOPERATION WITH THE
MICHIGAN DEPARTMENT OF TRANSPORTATION
AND THE FEDERAL HIGHWAY ADMINISTRATION
PLAN AND PROFILE OF PROPOSED

MAIN STREET AND VERMONTVILLE HIGHWAY ROAD IMPROVEMENTS



CONTROL SECTION No.
JOB No.

23000
215828

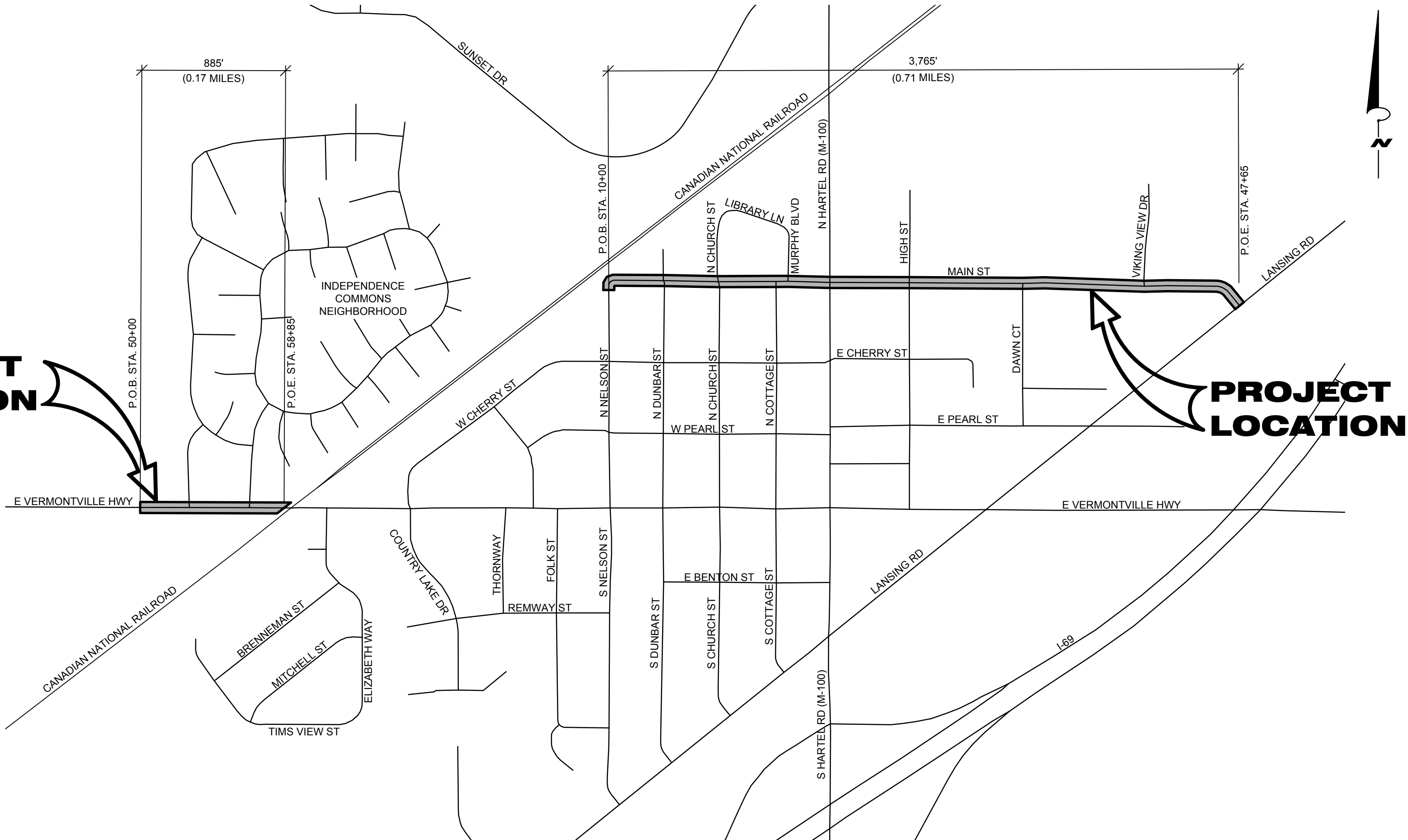
TRAFFIC DATA MAIN STREET

DESIGN SPEED	=	30 MPH
POSTED SPEED	=	25 MPH
ADT (2025)	=	452
ADT (2045)	=	816
DHV (2045)	=	82
% TRUCKS (2025 & 2045)	=	5%

TRAFFIC DATA VERMONTVILLE HWY

DESIGN SPEED	=	30 MPH
POSTED SPEED	=	25 MPH
ADT (2025)	=	2,774
ADT (2045)	=	5,010
DHV (2045)	=	501
% TRUCKS (2025 & 2045)	=	5%

PROJECT LOCATION



PROJECT LOCATION MAP
CITY OF POTTERVILLE
SCALE: NONE

UTILITIES

ELECTRIC	CONSUMERS ENERGY 530 WILLOW STREET LANSING, MI 48909 DAN SMITH (517) 374-2259
GAS	CONSUMERS ENERGY 311 E. MICHIGAN AVENUE BATTLE CREEK, MI 49017 KYLE OAK (269) 337-2366
FIBER OPTIC	ACD 1800 N. GRAND RIVER AVENUE LANSING, MI 48906 EVAN UNVERFERTH (517) 999-3249
TELEPHONE	AT&T 337 N. ABBOTT ROAD LANSING, MI 48823 HEATHER VALLEE-KNOBLAUGH (517) 337-3610
CABLE	WOW 2512 LANSING ROAD CHARLOTTE, MI 48813 JAMES SCOTT (517) 204-4910 COMCAST 41112 CONCEPT DRIVE PLYMOUTH, MI 48170 JEFF DOBIES (734) 359-1669
STORM SEWER / SANITARY SEWER / WATER UTILITIES	CITY OF POTTERVILLE 319 N. NELSON STREET POTTERVILLE, MI 48876 DON STANLEY (517) 667-9524
"MISS DIG"	811

NOTES

EXCEPT WHERE OTHERWISE INDICATED ON THESE PLANS OR IN THE PROPOSAL AND SUPPLEMENTAL SPECIFICATIONS CONTAINED THEREIN, ALL MATERIALS AND WORKMANSHIP SHALL BE IN ACCORDANCE WITH THE 2020 MICHIGAN DEPARTMENT OF TRANSPORTATION STANDARD SPECIFICATIONS FOR CONSTRUCTION.

THE PLACING OF PAVEMENT MARKINGS AND TRAFFIC CONTROL SIGNS SHALL BE DONE IN ACCORDANCE WITH THE 2018 MICHIGAN MANUAL ON UNIFORM TRAFFIC CONTROL DEVICES AS AMENDED.

THE IMPROVEMENTS COVERED BY THESE PLANS ARE IN ACCORDANCE WITH THE AMERICAN ASSOCIATION OF STATE HIGHWAY AND TRANSPORTATION OFFICIALS, 2011 EDITION, A POLICY ON GEOMETRIC DESIGN OF HIGHWAYS AND STREETS AND WITH SECTION C OF THE MICHIGAN DEPARTMENT OF TRANSPORTATION LOCAL AGENCY PROGRAMS GUIDELINES FOR GEOMETRICS DATED JULY 24, 2017.

IN CONFORMANCE WITH PUBLIC ACT 174 OF 2013, ALL CONTRACTORS SHALL CALL MISS DIG @ 811 OR 800-482-7171 FOR PROTECTION OF UNDERGROUND UTILITIES. A MINIMUM OF THREE FULL WORKING DAYS (EXCLUDING SATURDAYS, SUNDAYS AND HOLIDAYS) PRIOR TO BEGINNING EACH EXCAVATION IN ANY AREA, MEMBERS WILL THUS BE ROUTINELY NOTIFIED. THIS DOES NOT RELIEVE THE CONTRACTOR OF THE RESPONSIBILITY OF NOTIFYING UTILITY OWNERS WHO MAY NOT BE A PART OF THE "MISS DIG" ALERT SYSTEM.

CONTRACT FOR ROAD IMPROVEMENTS

0.71 MILES OF COLD MILLING AND HMA RESURFACING ON MAIN STREET INCLUDING SPOT CURB & GUTTER REPLACEMENT, ADA RAMP IMPROVEMENTS, WATER MAIN INSTALLATION AT MURPHY BLVD., PAVEMENT MARKINGS, PERMANENT SIGNAGE AND RESTORATION.

0.17 MILES OF COLD MILLING, HMA RESURFACING AND PAVEMENT MARKINGS ON E VERMONTVILLE HIGHWAY.

CITY OF POTTERVILLE APPROVAL

JENNIFER LENNEMAN	MAYOR	DATE
AARON SHERIDAN	CITY MANAGER	DATE



WIGHTMAN

433 E. RANSOM ST.
KALAMAZOO, MI. 49007
269.327.3532

www.gowightman.com

SAMUEL A. LEATCH
6201068854

PROJECT NAME:

MAIN STREET AND
VERMONTVILLE
HIGHWAY ROAD
IMPROVEMENTS

CITY OF
POTTERVILLE

319 N. NELSON STREET
POTTERVILLE, MI 48876

00 11/01/2023 SAL
PRELIMINARY - NOT FOR
CONSTRUCTION

REVISIONS

0.71 MILES OF COLD MILLING AND HMA RESURFACING ON MAIN STREET INCLUDING SPOT CURB & GUTTER REPLACEMENT, ADA RAMP IMPROVEMENTS, WATER MAIN INSTALLATION AT MURPHY BLVD., PAVEMENT MARKINGS, PERMANENT SIGNAGE AND RESTORATION.

0.17 MILES OF COLD MILLING, HMA RESURFACING AND PAVEMENT MARKINGS ON E VERMONTVILLE HIGHWAY.

DATE: NOVEMBER, 2023

SCALE: AS NOTED

COVER SHEET

JOB No. 215828

C001
OF 9

CITY OF POTTERVILLE - MAIN STREET AND VERMONTVILLE HIGHWAY ROAD IMPROVEMENTS

PROJECT NOTES

1. ALL WORK SHALL CONFORM TO ALL LOCAL, STATE AND FEDERAL LAWS, RULES AND REGULATIONS IN FORCE AT THE TIME OF CONSTRUCTION.
2. THE CONTRACTOR SHALL LOCATE ALL ACTIVE UNDERGROUND UTILITIES PRIOR TO STARTING WORK AND SHALL CONDUCT HIS OPERATIONS IN A MANNER AS TO ENSURE THAT THOSE UTILITIES NOT REQUIRING RELOCATION WILL NOT BE DISTURBED.
3. THE CONTRACTOR SHALL BE RESPONSIBLE FOR CONTACTING THE CITY OF POTTERVILLE TO NOTIFY THEM THAT WORK IS COMMENCING.
4. THE SOIL BORINGS WERE TAKEN BY WIGHTMAN ON 09/29/2023.
5. THE TEST BORINGS REPRESENT POINT INFORMATION AND MAY NOT HAVE ENCOUNTERED ALL THE TYPES AND MATERIALS WHICH ARE PRESENT AT THE SITE. THESE BORING LOGS DO NOT CONSTITUTE A GUARANTEE OF THE SOIL OR GROUNDWATER CONDITIONS, OR THAT THE TEST BORINGS ARE AN EXACT REPRESENTATION OF THE SOIL OR GROUNDWATER CONDITIONS AT ALL POINTS ON THE SITE.
6. SEE PLANS FOR SOIL BORING DATA.
7. THE CONTRACTOR SHALL CONDUCT THE WORK IN SUCH A MANNER SO NO EXCAVATIONS ARE LEFT OPEN OVERNIGHT. IF THIS IS NOT POSSIBLE, THE CONTRACTOR SHALL REQUEST PERMISSION FROM THE ENGINEER PRIOR TO LEAVING ANY EXCAVATIONS OPEN OVERNIGHT. IF APPROVAL IS RECEIVED FROM THE ENGINEER, CONTRACTOR SHALL INSTALL A TEMPORARY FENCE TO PROTECT THE EXCAVATION AT THEIR OWN EXPENSE.
8. THE CONTRACTOR IS RESPONSIBLE FOR MAINTAINING EXISTING DRAINAGE PATTERNS, AND SHALL RESOLVE ANY DRAINAGE PROBLEMS ON ADJACENT PROPERTIES WHICH MAY RESULT FROM THE CONTRACTOR'S ACTIVITIES.
9. DATUM REFERS TO NAVD88 DATUM.
10. SPOT ELEVATIONS WITHIN VICINITY OF PROPOSED CONCRETE CURB AND GUTTER REFER TO EDGE OF METAL ELEVATIONS. PITCH PAVEMENT/CONCRETE GUTTERS UNIFORMLY BETWEEN PROPOSED SPOT ELEVATIONS.
11. ALL SCALES FOR DRAWINGS AND DETAILS ARE BASED ON 24"x36" PRINTED PLANS. DIMENSIONS TAKE PRECEDENCE OVER SCALE. CONTRACTOR TO VERIFY ALL DIMENSIONS IN FIELD.
12. ALL RADII FOR CURB AND GUTTER ARE DIMENSIONED TO THE BACK OF THE CURB.
13. TAPER THE CURBS TO ZERO HEIGHT AT SIDEWALKS. SIDEWALK RAMPS SHALL BE BARRIER FREE AND CONSTRUCTED IN ACCORDANCE WITH THE MDOT SIDEWALK RAMP AND DETECTABLE WARNING DETAILS (R-28 SERIES). SIDEWALK JOINTS SHALL BE IN ACCORDANCE WITH THE MDOT DRIVEWAY OPENINGS & APPROACHES AND CONCRETE SIDEWALKS (R-29 SERIES) UNLESS NOTED OTHERWISE.
14. EXPANSION JOINTS FOR CONCRETE CURB AND GUTTER SHALL BE PLACED AT: CURB CORNERS, BEGINNING AND ENDING OF RADII, ALL CATCH BASINS AND MANHOLES, INTERSECTION OF CURB/SIDEWALK, CURB/RETAINING WALL, CURB/BUILDING, AND EXISTING/NEW CONSTRUCTION, AT LENGTHS OF NOT MORE THAN 120' APART, AND AS SPECIFIED ELSEWHERE.
15. EXISTING DRAINAGE STRUCTURE COVERS FOR STORM MANHOLES THAT ARE TO REMAIN SHALL BE REPLACED WITH COVER B PRIOR TO FINAL ADJUSTMENT. EXISTING DRAINAGE STRUCTURE COVERS FOR SANITARY MANHOLES SHALL BE REPLACED WITH COVER Q PRIOR TO FINAL ADJUSTMENT. EXISTING CATCH BASIN COVERS THAT ARE TO REMAIN SHALL BE REPLACED WITH COVER K PRIOR TO FINAL ADJUSTMENT.
16. MAINTAIN 10 FOOT MINIMUM HORIZONTAL SEPARATION BETWEEN THE SANITARY OR STORM SEWER AND WATER MAIN UTILITIES. PROVIDE 18" MINIMUM VERTICAL SEPARATION WHERE THE WATER MAIN CROSSES A SANITARY OR STORM SEWER.
17. ANY SANITARY SEWER, SANITARY SEWER SERVICE LEADS, WATER MAIN, WATER SERVICES, OR STORM SEWER THAT IS DAMAGED BY THE CONTRACTOR DURING THEIR OPERATIONS SHALL BE REPAIRED TO THE OWNER'S SATISFACTION AND AT THE CONTRACTOR'S EXPENSE.
18. ALL PERMANENT SIGNAGE SHALL COMPLY WITH THE MICHIGAN'S BARRIER FREE DESIGN REQUIREMENTS AND THE AMERICANS WITH DISABILITIES ACT.
19. THE TACTILE PLATES FOR THE ADA RAMPS WILL BE BLACK IN COLOR TO MATCH EXISTING DETECTABLE WARNING PLATES THROUGHOUT THE CITY. TRUNCATED DOMES SHALL BE TAMPED INTO WET CONCRETE IN ACCORDANCE WITH MDOT AND ADA ACCESSIBILITY GUIDELINES FOR DETECTABLE WARNINGS AND THE MANUFACTURER'S RECOMMENDATIONS FOR INSTALLATION.
20. PROPERTY OWNER'S NAMES, WHERE SHOWN, ARE FOR INFORMATION ONLY, AND THEIR ACCURACY IS NOT GUARANTEED.
21. COMPACTION OF ANY FILL BY FLOODING IS NOT ACCEPTABLE. THIS METHOD WILL GENERALLY NOT ACHIEVE THE DESIRED COMPACTION, AND THE LARGE QUANTITIES OF WATER WILL TEND TO SOFTEN THE FOUNDATION SOILS.
22. ALL FILL FOR THIS PROJECT MUST BE OBTAINED AND FURNISHED BY THE CONTRACTOR. ALL REQUIRED FILL SHALL BE SELECTED EXCAVATED MATERIAL FROM THE SITE APPROVED BY THE ENGINEER, OR MDOT CLASS II GRANULAR MATERIAL FROM BORROW. EXCESS FILL SHALL BE REMOVED FROM THE PROJECT SITE BY THE CONTRACTOR. NOTE: NO BORROW OR SOIL REMOVAL ARRANGEMENTS HAVE BEEN PREARRANGED FOR THIS PROJECT, AND SHALL BE THE RESPONSIBILITY OF THE CONTRACTOR.
23. MATERIAL FOR AGGREGATE BASE SHALL BE MDOT 22A GRAVEL, 22A SLAG, 22A LIMESTONE, 22A RECYCLED CONCRETE, OR COLD MILLED HMA MATERIAL WHICH APPROXIMATES THE GRADATION OF 22A MATERIAL. IF MILLED MATERIAL IS USED, IT MAY BE USED FULL DEPTH OR ON TOP OF 22A AGGREGATE TO OBTAIN THE REQUIRED THICKNESS. 22A GRAVEL SHALL NOT BE PLACED ON TOP OF MILLED HMA MATERIAL. A MIX GREATER THAN 50% MILLED HMA MATERIAL SHALL NOT BE USED AS AN AGGREGATE FROM SEPTEMBER 15 TO MAY 1 WITHOUT THE WRITTEN PERMISSION OF THE ENGINEER.
24. HMA INTERSECTION APPROACHES WILL NOT BE A SEPARATE PAY ITEM FOR THIS PROJECT. ALL HMA ON INTERSECTING STREETS WILL BE PAID FOR UNDER THE MAINLINE HMA BID ITEMS.
25. ALL STRUCTURES REQUIRING ADJUSTMENT TO FINAL GRADE SHALL BE BACK FILLED WITH CONCRETE TO APPROXIMATELY 2" BELOW FINAL GRADE. PRIOR TO THE PLACEMENT OF THE STRAIGHT EDGE (4' x 4') OR CIRCLE AREA (MIN. 4' DIA.) SHALL BE SAWCUT AND REMOVED AROUND DRAINAGE STRUCTURE COVERS (2' x 2' SQUARE OR MIN. 2' DIA. CIRCLE AROUND WATER VALVE BOXES). CONCRETE SHALL BE PLACED TO A DEPTH OF 8 INCHES MINIMUM AND BE PAID FOR AS DR STRUCTURE COVER, ADJ. CASE 1.
26. EACH WATER VALVE BOX OR CASTING SHOULD BE FLUSH WITH, OR SLIGHTLY BELOW, THE LEVEL OF THE FINISHED COURSE OF PAVEMENT. IN-LID ADJUSTING RINGS WILL NOT BE ALLOWED FOR WATER VALVE BOXES OR DRAINAGE STRUCTURE COVERS. THE ENGINEER WILL MEASURE ANY VALVE BOX OR CASTING THAT APPEARS TO BE OUT OF THE ACCEPTED TOLERANCE. DETERMINATION OF WHETHER A VALVE BOX OR CASTING MUST BE ADJUSTED WILL BE BASED UPON THE FOLLOWING:

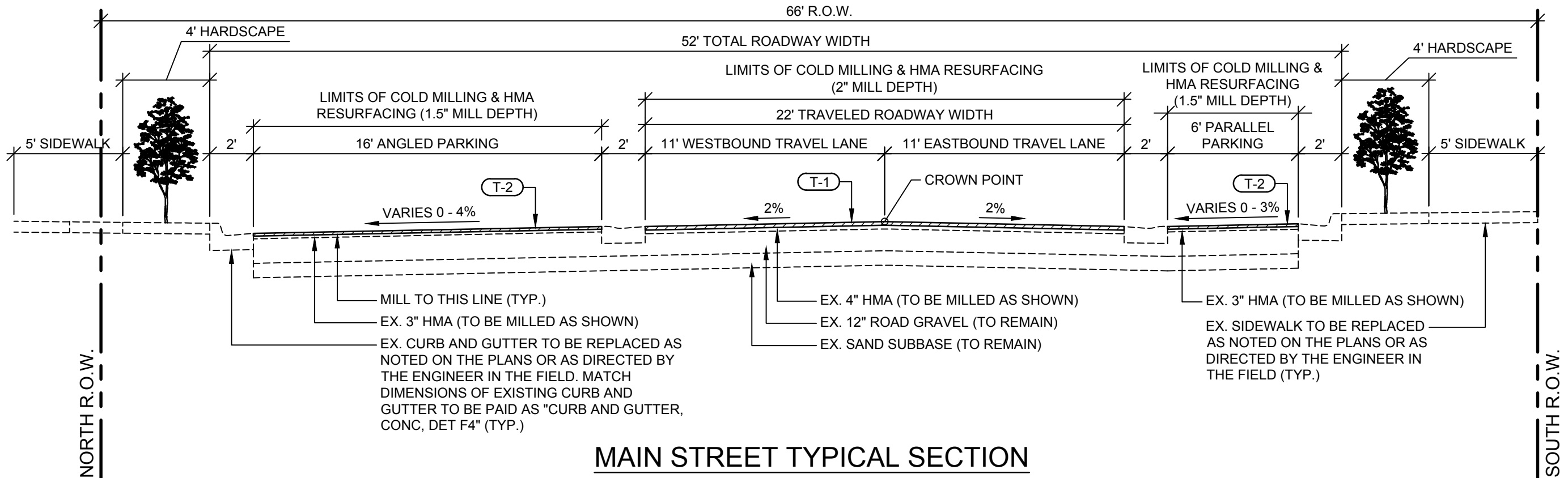
VALVE BOXES AND CASTINGS BELOW PAVEMENT SURFACE - A TEN-FOOT (10') STRAIGHT EDGE (PROVIDED BY THE CONTRACTOR) WILL BE PLACED OVER THE VALVE BOX OR CASTING, PARALLEL TO THE ROAD CENTERLINE. MEASUREMENT WILL BE MADE FROM THE BOTTOM OF THE STRAIGHT EDGE TO THE RAISED PORTIONS ON THE COVER OF THE VALVE BOX OR CASTING. FOR WATER VALVE BOXES, THIS DISTANCE SHALL BE NO GREATER THAN ONE-HALF INCH (1/2"). FOR CASTINGS, THIS DISTANCE SHALL BE NO GREATER THAN ONE-QUARTER INCH (1/4"). ANY MEASUREMENT FOUND OVER ONE-HALF INCH (1/2") FOR VALVE BOXES OR ONE-QUARTER INCH (1/4") FOR CASTINGS WILL RATE THE VALVE BOX OR CASTING OUT OF TOLERANCE. THE ENGINEER SHALL INSTRUCT THE CONTRACTOR TO ADJUST SUCH A VALVE BOX OR CASTING. THE CITY WILL NOT PAY FOR THE ORIGINAL ADJUSTMENT/RECONSTRUCTION OF THIS VALVE BOX OR CASTING. PAYMENT WILL BE MADE ONE TIME ONLY, AFTER THE VALVE BOX OR CASTING HAS BEEN RESET PROPERLY.

VALVE BOXES OR CASTINGS ABOVE PAVEMENT SURFACE - BECAUSE OF POTENTIAL DAMAGE TO AND FROM SNOWPLOW BLADES, VALVE BOXES OR CASTINGS PROTRUDING ANY DISTANCE ABOVE THE LEVEL OF FINISHED PAVEMENT WILL BE CONSIDERED OUT OF TOLERANCE. THE ENGINEER SHALL INSTRUCT THE CONTRACTOR TO ADJUST SUCH A VALVE BOX OR CASTING. THE CITY WILL NOT PAY FOR THE ORIGINAL ADJUSTMENT/RECONSTRUCTION OF THIS VALVE BOX OR CASTING. PAYMENT WILL BE MADE ONE TIME ONLY, AFTER THE VALVE BOX OR CASTING HAS BEEN RESET PROPERLY.

IF A VALVE BOX OR CASTING IS RATED AS OUT OF TOLERANCE, THE CONTRACTOR SHALL RE-ADJUST THE VALVE BOX OR CASTING AS INSTRUCTED BY THE ENGINEER. SAWCUTTING NEWLY PLACED PAVEMENT WILL NOT BE ALLOWED. TO MAKE THE RE-ADJUSTMENTS, THE CONTRACTOR SHALL UTILIZE AN INFRARED RESTORATION PROCESS TO ASSURE THAT THERE WILL BE A SEAMLESS REPAIR. ADDITIONALLY, EXTENSIONS OF TIME FOR RE-ADJUSTMENTS WILL NOT BE CONSIDERED.

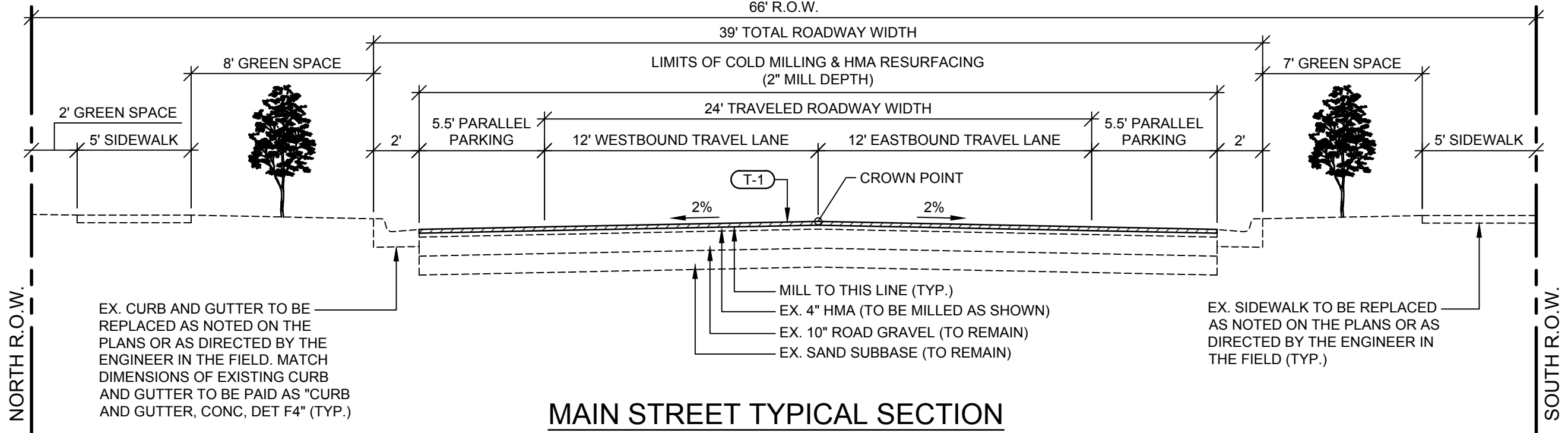
SOIL EROSION & SEDIMENTATION CONTROL NOTES

1. ALL CONSTRUCTION METHODS SHALL BE DONE IN COMPLIANCE WITH THE MICHIGAN SOIL EROSION AND SEDIMENTATION CONTROL ACT. EROSION CONTROL MEASURES SHOWN ON THE PLANS ARE THE MINIMUM REQUIREMENTS AND SHALL NOT RELIEVE THE CONTRACTOR'S RESPONSIBILITY FOR PROVIDING ALL REQUIRED EROSION CONTROL MEASURES.
2. INSTALLATION OF SESC MEASURES SHALL BE DONE IN ACCORDANCE WITH THE CURRENT EDITION OF THE MDOT/DTMB SOIL EROSION MANUAL AND CURRENT EDITION OF THE MDOT STANDARD SPECIFICATIONS. REFER TO THE APPROPRIATE MANUAL FOR THE PROPER MAINTENANCE AND INSTALLATION OF SESC MEASURES.
3. AVOID UNNECESSARY DISTURBING OR REMOVING OF EXISTING VEGETATED TOPSOIL OR EARTH COVER, THESE COVER AREAS ACT AS SEDIMENT FILTERS.
4. ALL TEMPORARY SOIL EROSION PROTECTION SHALL REMAIN IN PLACE UNTIL REMOVAL IS REQUIRED FOR FINAL CLEAN UP AND APPROVAL.
5. GEOTEXTILE SILT FENCE SHALL BE INSTALLED AS REQUIRED WHEN CROSSING CREEKS OR WHEN ADJACENT TO WETLANDS OR SURFACE WATER BODIES TO PREVENT SILTATION AND ELSEWHERE AS DIRECTED BY THE ENGINEER. SEEDING AND/OR SODDING SHALL BE INSTALLED ON CREEK BANKS IMMEDIATELY AFTER CONSTRUCTION TO PREVENT EROSION.
6. MAINTENANCE, CLEANING, AND REMOVAL OF THE VARIOUS SEDIMENT CONTROL MEASURES SHALL BE INCLUDED IN THE VARIOUS EROSION CONTROL ITEMS.
7. ADEQUATE DUST CONTROL MEASURES SHALL BE MAINTAINED BY THE CONTRACTOR AS DIRECTED BY THE ENGINEER IN THE FIELD, TO BE INCLUDED IN THE VARIOUS ITEMS OF WORK.
8. ALL CATCH BASINS AND SEDIMENTATION BASINS SHALL BE CLEANED OUT UPON FINAL COMPLETION OF THE PROJECT. COSTS FOR CLEANING SHALL BE INCLUDED IN THE VARIOUS ITEMS OF WORK.



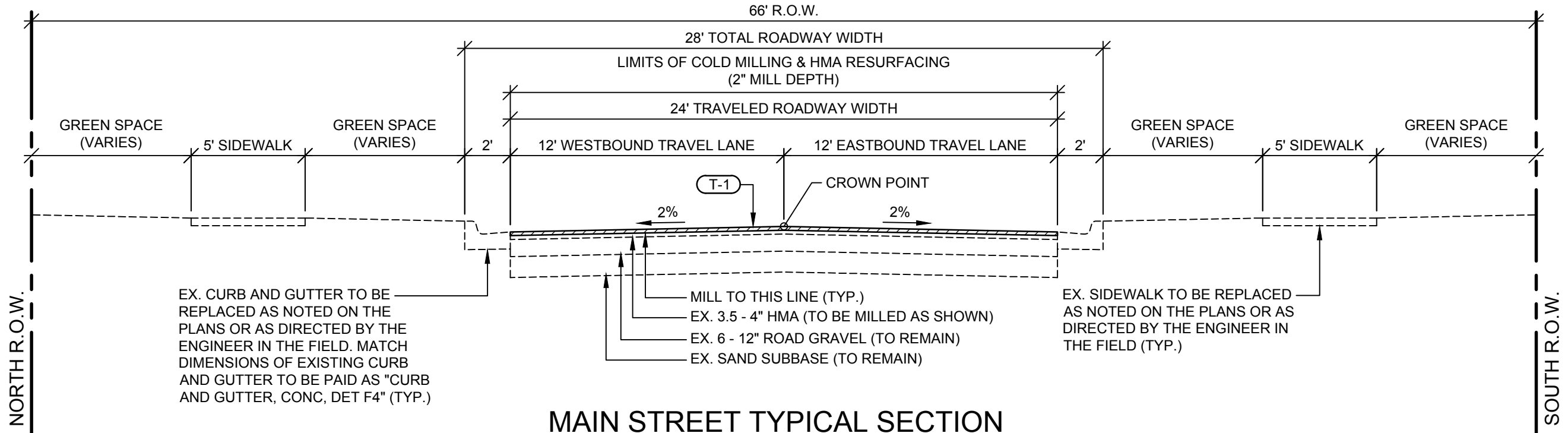
MAIN STREET TYPICAL SECTION

SCALE: 1" = 5'
SECTION APPLIES: P.O.B. STA. 10+00 TO STA. 16+75



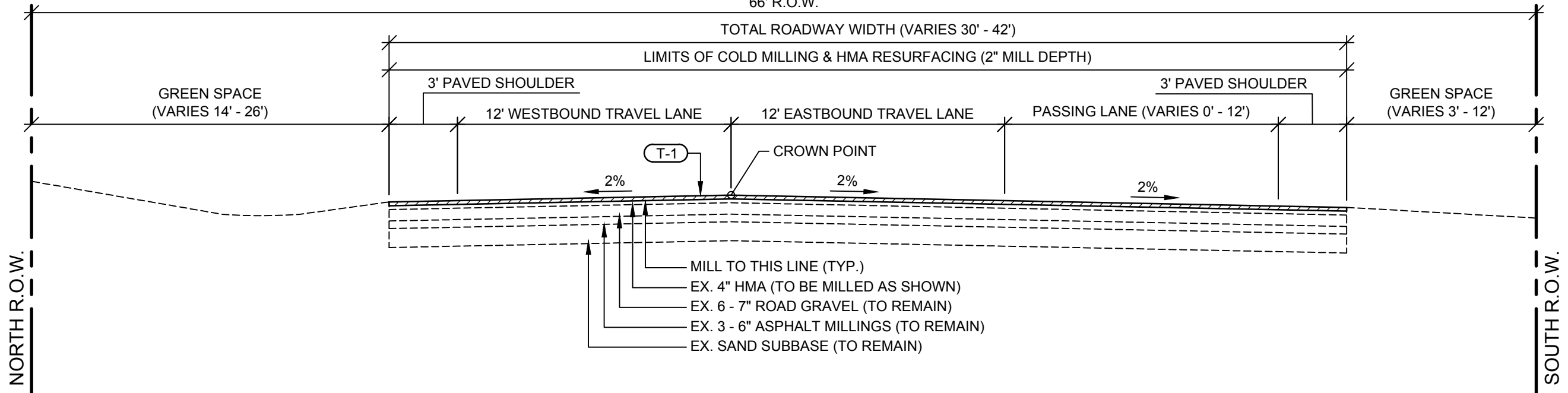
MAIN STREET TYPICAL SECTION

SCALE: 1" = 5'
SECTION APPLIES: STA. 16+75 TO STA. 22+85



MAIN STREET TYPICAL SECTION

SCALE: 1" = 5'
SECTION APPLIES: STA. 23+85 TO P.O.E. STA. 47+65




VERMONTVILLE HIGHWAY TYPICAL SECTION

SCALE: 1" = 5'
SECTION APPLIES: P.O.B. STA. 50+00 TO P.O.E. STA. 58+85

ITEM	AWI	YIELD	PERFORMANCE GRADE	NOTES
L-1	HMA, 5EL (LEVELING)	220#/SYD	P.G. 58 - 28	WATER MAIN TRENCH
T-1	HMA, 5EL (TOP)	260	P.G. 58 - 28	MAINLINE HMA PAVING
T-2	HMA, 5EL (TOP)	260	P.G. 58 - 28	PARKING AREAS
HAND PATCHING (HMA, 5EL)		165 - 220#/SYD	P.G. 58 - 28	USE ONLY IF DIRECTED BY THE ENGINEER
HMA BOND COAT (NOT A PAY ITEM)		0.05 TO 0.15 GAL/SYD	SS - 1h	

HMA APPLICATION TABLE

MISCELLANEOUS QUANTITIES	
ITEM	QTY.
Mobilization, Max \$50,000	1 LSUM
Curb and Gutter, Rem, Modified	200 Ft
Pavt, Rem	50 Syd
Sidewalk, Rem	100 Syd
Erosion Control, Silt Fence	100 Ft
Dr Structure Cover, Adj, Case 1	6 Ea
Dr Structure Cover, Type B	1 Ea
Dr Structure Cover, Type K	5 Ea
Dr Structure, Temp Lowering	2 Ea
Hand Patching	25 Ton
Conc Base Case, Nonreinf, 7 inch	25 Syd
Driveway, Nonreinf Conc, 6 inch	50 Syd
Curb and Gutter, Conc, Det F4	200 Ft
Driveway Opening, Conc, Det M	50 Ft
Sidewalk, Conc, 4 inch	700 Sft
Sidewalk, Conc, 6 inch	100 Sft
Curb Ramp, Conc, 6 inch	100 Sft
Sign, Type III, Rem	1 Ea
Barricade, Type III, High Intensity, Double Sided, Lighted, Furn	10 Ea
Barricade, Type III, High Intensity, Double Sided, Lighted, Oper	10 Ea
Minor Traf Devices	1 LSUM
Plastic Drum, Fluorescent, Furn	100 Ea
Plastic Drum, Fluorescent, Oper	100 Ea
Sign, Type B, Temp, Prismatic, Furn	500 Sft
Sign, Type B, Temp, Prismatic, Oper	500 Sft
Sign, Type B, Temp, Prismatic, Spec, Furn	100 Sft
Sign, Type B, Temp, Prismatic, Spec, Oper	100 Sft
Traf Regulator Control	1 LSUM
Slope Restoration, Non-Freeway, Type B	500 Syd
Water Shutoff, Adj, Case 1	1 Ea
Water Shutoff, Adj, Case 2	1 Ea
Gate Box, Adj, Case 1	1 Ea
Gate Box, Adj, Case 2	1 Ea
Sanitary Structure Cover, Type Q	1 Ea
Sanitary Structure Cover, Adj, Case 1	1 Ea



WIGHTMAN

433 E. RANSOM ST.
KALAMAZOO, MI. 49007
269.327.3532

www.gowightman.com

SAMUEL A. LEATCH
6201068854

PROJECT NAME:
MAIN STREET AND VERMONTVILLE HIGHWAY ROAD IMPROVEMENTS

CITY OF POTTERVILLE
319 N. NELSON STREET
POTTERVILLE, MI 48876

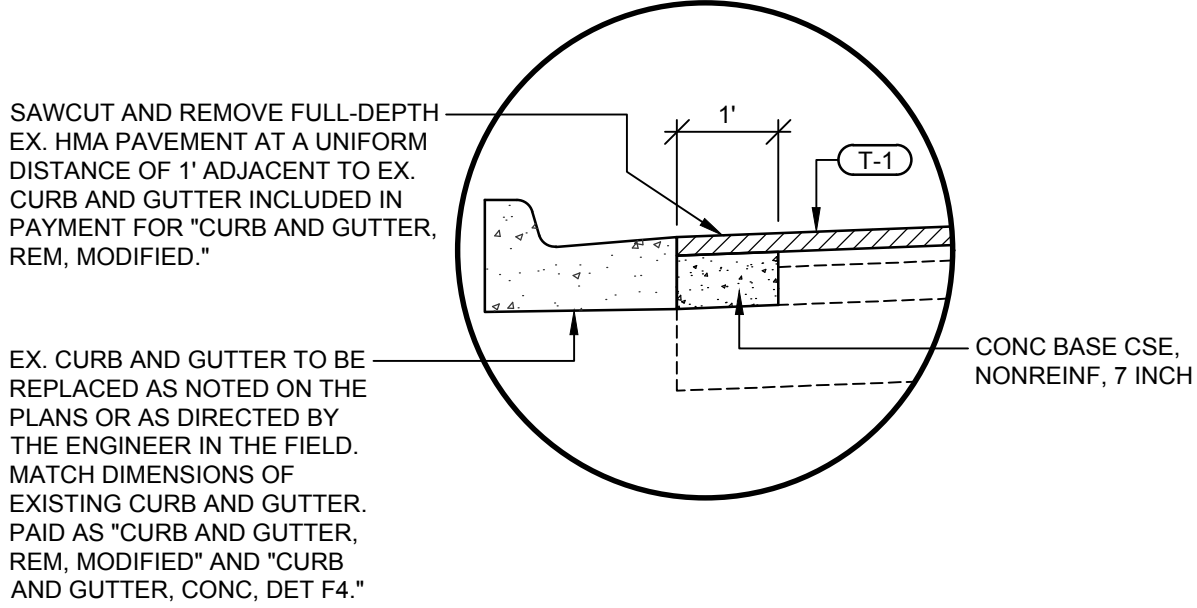
00 11/01/2023 SAL
PRELIMINARY - NOT FOR CONSTRUCTION

REVISIONS

DATE: NOVEMBER, 2023
SCALE: AS NOTED

TYPICAL SECTIONS, NOTES, MISC. QUANTITIES

JOB No. 215928
C002
OF 9



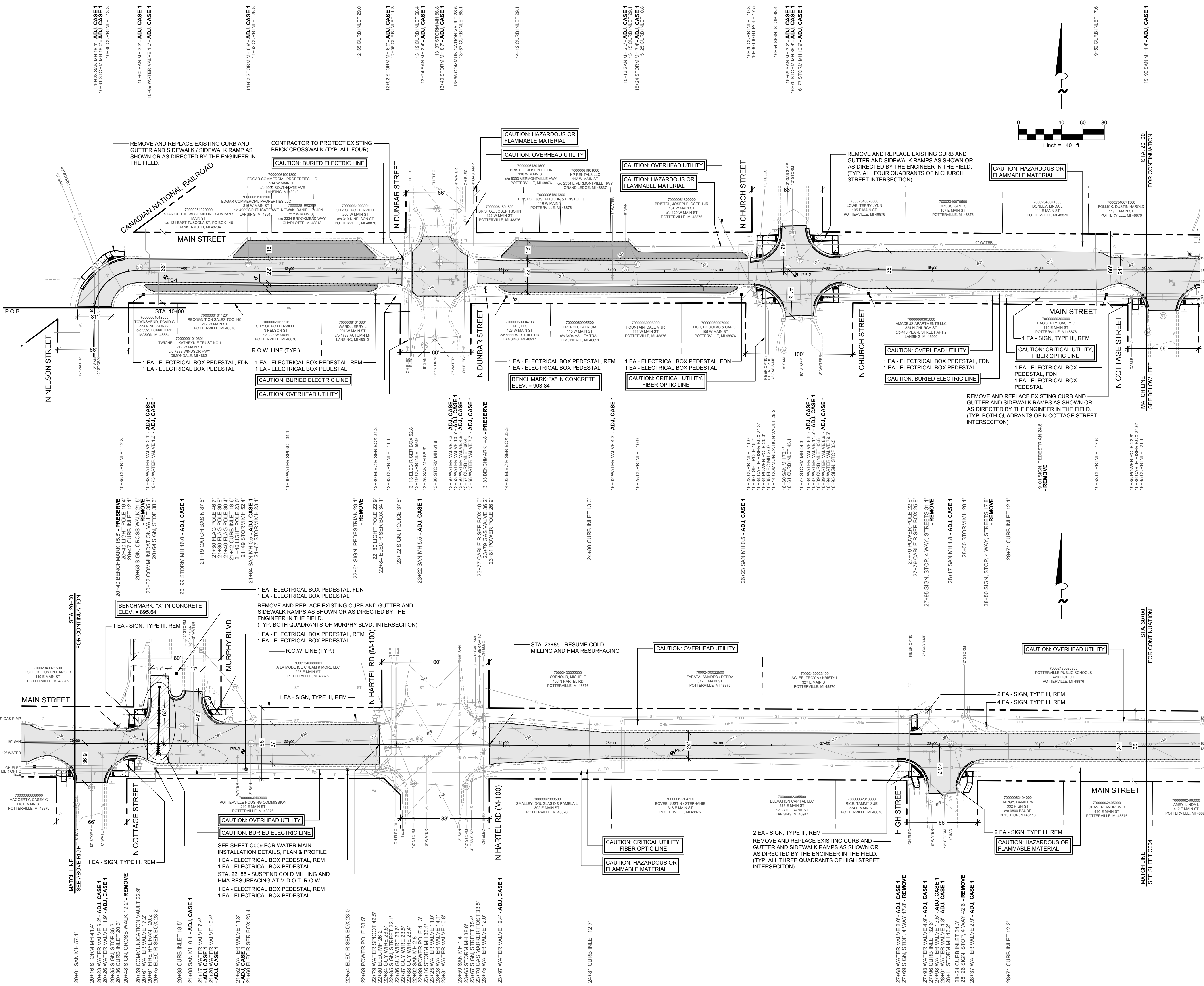
DETAIL - SPOT CURB AND GUTTER REPLACEMENT

SCALE: NONE

EXISTING	PROPOSED	
C	C	CABLE
E	E	ELECTRIC LINE
OWE	OWE	ELECTRIC LINE (OVERHEAD)
FO	FO	FIBER OPTIC LINE
G	G	GAS LINE
T	T	TELEPHONE LINE
X	X	FENCE
X	X	FORCEMAIN
X	X	GUARDRAIL
X	X	SANITARY SEWER
X	X	STORM SEWER
X	X	WATER MAIN
X	X	CENTER LINE
---	---	EXISTING TREE LINE
---	---	EXISTING DITCH LINE
---	---	EASEMENT LINE/GRADING PERMIT
---	---	GRADING LIMITS/LIMITS OF DISTURBANCE
---	---	PROPERTY LINE
---	---	RIGHT-OF-WAY LINE
---	---	SECTION LINE
---	---	TO BE ABANDONED

1	= ANTENNA	8"	= PAVEMENT/SOIL BORING
1	= CATCH BASIN	8"	= PROPOSED HYDRANT
1	= CABLE RISER BOX	8"	= PROPOSED GATE VALVE & BOX
1	= CLEAN OUT	8"	= PROPOSED GATE VALVE & VAULT
1	= CURB INLET	8"	= PROPOSED REDUCER
1	= ELECTRIC MANHOLE	8"	= PROPOSED SANITARY MANHOLE
1	= FIRE HYDRANT	8"	= PROPOSED STORM MANHOLE
1	= FOUND IRON PIPE	8"	= STORM MANHOLE
1	= GAS VALVE	8"	= TELEPHONE MANHOLE
1	= GUY ANCHOR	8"	= TELEPHONE RISER BOX
1	= LIGHT POLE	8"	= TURNING POINT/TRaverse
1	= MAILBOX	8"	= UTILITY POLE
1	= MONITORING WELL	8"	= VAULT
1	= POST	8"	= WATER ELEVATION
1	= SATELLITE DISH	8"	= WATER MANHOLE
1	= SANITARY MANHOLE	8"	= WATER METER
1	= SECTION CORNER	8"	= WATER VALVE
1	= SIGN	8"	= WATER SPIGOT
1		8"	= WELL

TREE DESIGNATORS	
	BUSH
	CONIFEROUS TREE
	STUMP
	DECIDUOUS TREE



QUANTITIES THIS SHEET	
ITEM	QTY.
Curb and Gutter, Rem, Modified	410 Ft
Sidewalk, Rem	220 Syd
Erosion Control, Inlet Protection, Fabric Drop	30 Ea
Subbase, CIP	60 Cyd
Aggregate Base, 8 inch	180 Syd
Dr Structure Cover, Adj, Case 1	8 Ea
Dr Structure Cover, Type B	8 Ea
Dr Structure, Temp Lowering	16 Ea
Cold Milling HMA Surface	7,100 Syd
HMA Surface, Rem	180 Syd
HMA, 5EL	875 Ton
Conc Base Cse, Nonreinf, 7 inch	50 Syd
Curb and Gutter, Conc, Det F4	270 Ft
Detectable Warning Surface	105 Ft
Curb Ramp Opening, Conc	140 Ft
Sidewalk, Conc, 4 inch	650 Sft
Curb Ramp, Conc, 6 inch	1,120 Sft
Sign, Type III, Rem	14 Ea
Slope Restoration, Non-Freeway, Type B	300 Syd
Gate Box, Adj, Temp, Case 1	22 Ea
Sanitary Structure Cover, Type Q	10 Ea
Sanitary Structure Cover, Adj, Case 1	10 Ea
Electrical Box Pedestal, Fdn	5 Ea
Electrical Box Pedestal	10 Ea
Electrical Box Pedestal, Rem	5 Ea
Gate Valve and Box, 12 inch	1 Ea
Water Main, DI, 12 inch, Tr Det G	75 Ft
Connect to Existing Main, 12 inch	1 Ea
Compact Ductile Iron Fittings	700 Lb

NOTE: CONTRACTOR TO VERIFY LOCATION OF PROPOSED ELECTRICAL BOX FOUNDATIONS AND PEDESTALS WITH CITY OF POTTERVILLE PRIOR TO PLACEMENT.

BORINGS	
PB-1	0 - 4" ASPHALT 4 - 16" ROAD GRAVEL 16 - 27" BROWN MEDIUM SAND 27 - 60" BROWN MEDIUM SAND WITH ASPHALT AND CLUMPS OF CLAYEY SAND 60 - 62" GRAY CLAY WITH SAND 62" END OF BORING
PB-2	0 - 4.25" ASPHALT 4.25 - 15" ROAD GRAVEL 15 - 60" BROWN MEDIUM SAND 60" END OF BORING
PB-3	0 - 3.75" ASPHALT 3.75 - 14" ROAD GRAVEL 14 - 38" BROWN MEDIUM SAND 38 - 60" BROWN CLAYEY FINE SAND 60" END OF BORING
PB-4	0 - 3.5" ASPHALT 3.5 - 13" ROAD GRAVEL 13 - 32" BROWN MEDIUM TO COARSE SAND WITH TRACES OF ASPHALT 32 - 60" BROWN FINE SAND WITH CLAY 60" END OF BORING

LEGEND	
	MILL EXISTING HMA SURFACE TO A DEPTH OF 2 INCHES PAID AS COLD MILLING HMA SURFACE. RESURFACE WITH 220 #SYD HMA, 5EL (TOP).
	MILL EXISTING HMA SURFACE TO A DEPTH OF 1.5 INCHES PAID AS COLD MILLING HMA SURFACE. RESURFACE WITH 165 #SYD HMA, 5EL (TOP).
	SAWCUT AND REMOVE FULL DEPTH EXISTING HMA SURFACE AT A UNIFORM WIDTH OF 1' ADJACENT TO EXISTING CURB AND GUTTER INCLUDED IN PAYMENT FOR CURB AND GUTTER, REM, MODIFIED. REPLACE WITH CONC BASE CSE, NONREINF, 6 INCH AND 220 #SYD HMA, 5EL (TOP).
	SAWCUT AND REMOVE FULL DEPTH EXISTING HMA SURFACE PAID AS HMA SURFACE, REM. REPLACE WITH SUBBASE, CIP (12 INCH MIN.), AGGREGATE BASE, 8 INCH, 220 #SYD HMA, 5EL (LEVELING) AND 220 #SYD HMA, 5EL (TOP).
	SAWCUT AND REMOVE EXISTING SIDEWALK PAID FOR AS SIDEWALK, REM. INSTALL SIDEWALK, CONC, 4 INCH (6 INCH THROUGH DRIVES) AND CURB RAMP, CONC, 6 INCH
	INSTALL DETECTABLE WARNING SURFACE AT ALL ADA RAMP SIDEWALK / CURB INTERFACES.

433 E. RANSOM ST.
KALAMAZOO, MI 49007
269.327.3532
www.gowightman.com

SAMUEL A. LEATCH
6201068854

PROJECT NAME:
MAIN STREET AND VERMONTVILLE HIGHWAY ROAD IMPROVEMENTS

CITY OF POTTERVILLE
319 N. NELSON STREET
POTTERVILLE, MI 48876

00 11/01/2023 SAL
PRELIMINARY - NOT FOR CONSTRUCTION

REVISIONS

1	DATE: NOVEMBER, 2023
2	SCALE: 1" = 40'

ROAD PLAN - MAIN STREET
STA. 10+00 (P.O.B.) TO STA. 30+00

Job No. 215828
C003
OF 9

CONTROL SECTION NO. 23000 JOB NO. 215828



433 E. RANSOM ST.
KALAMAZOO, MI. 49007
269.327.3532

www.gowightman.com

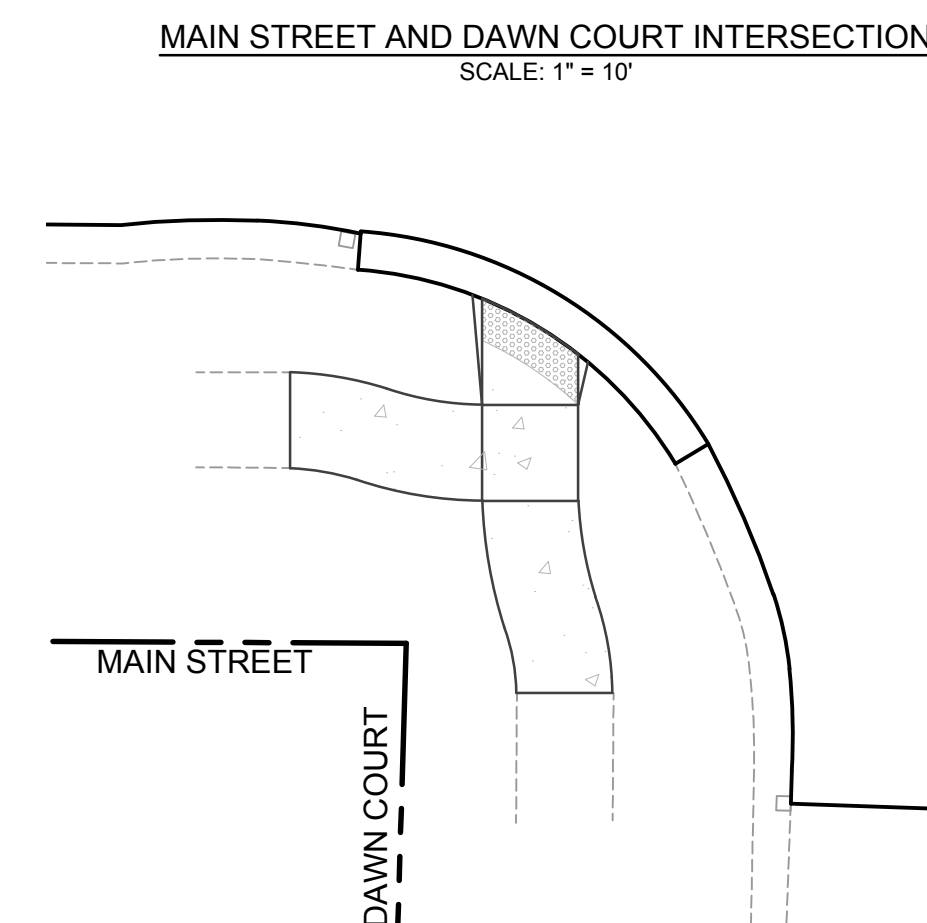
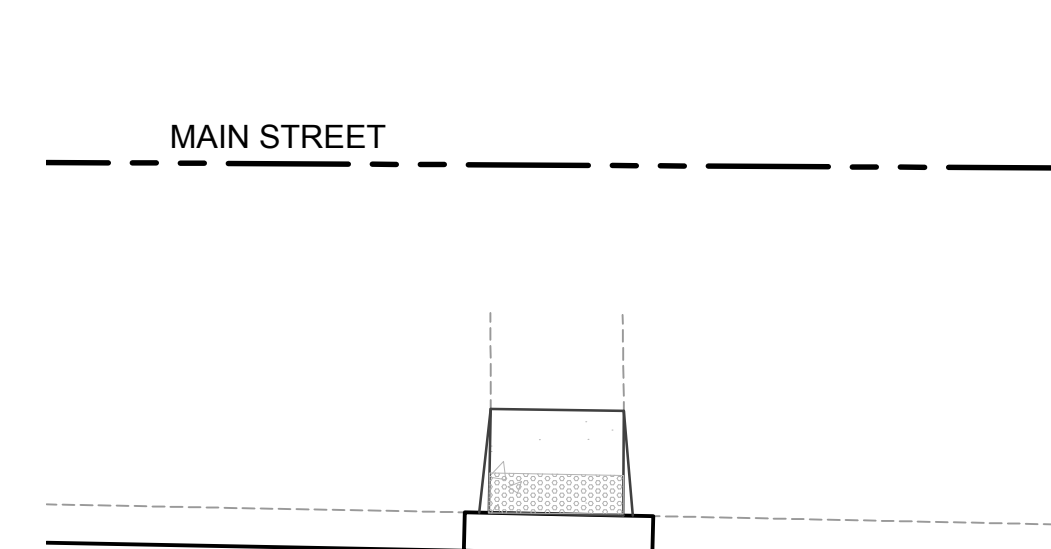
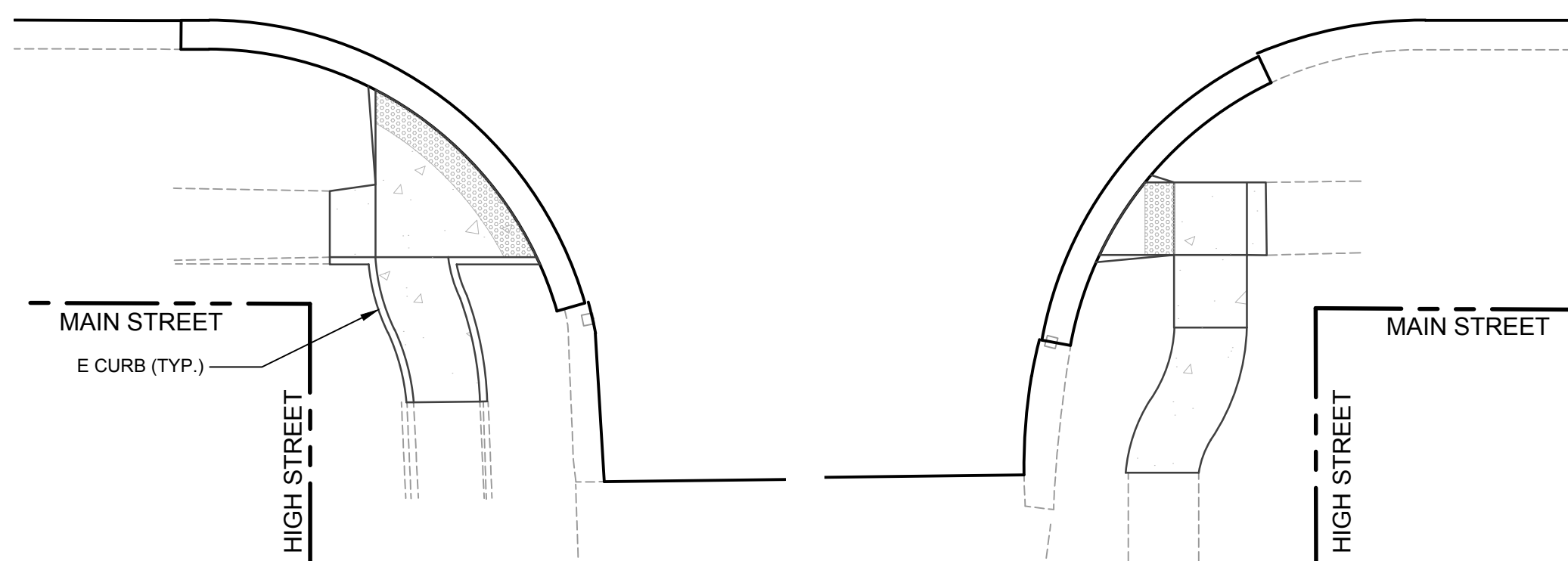
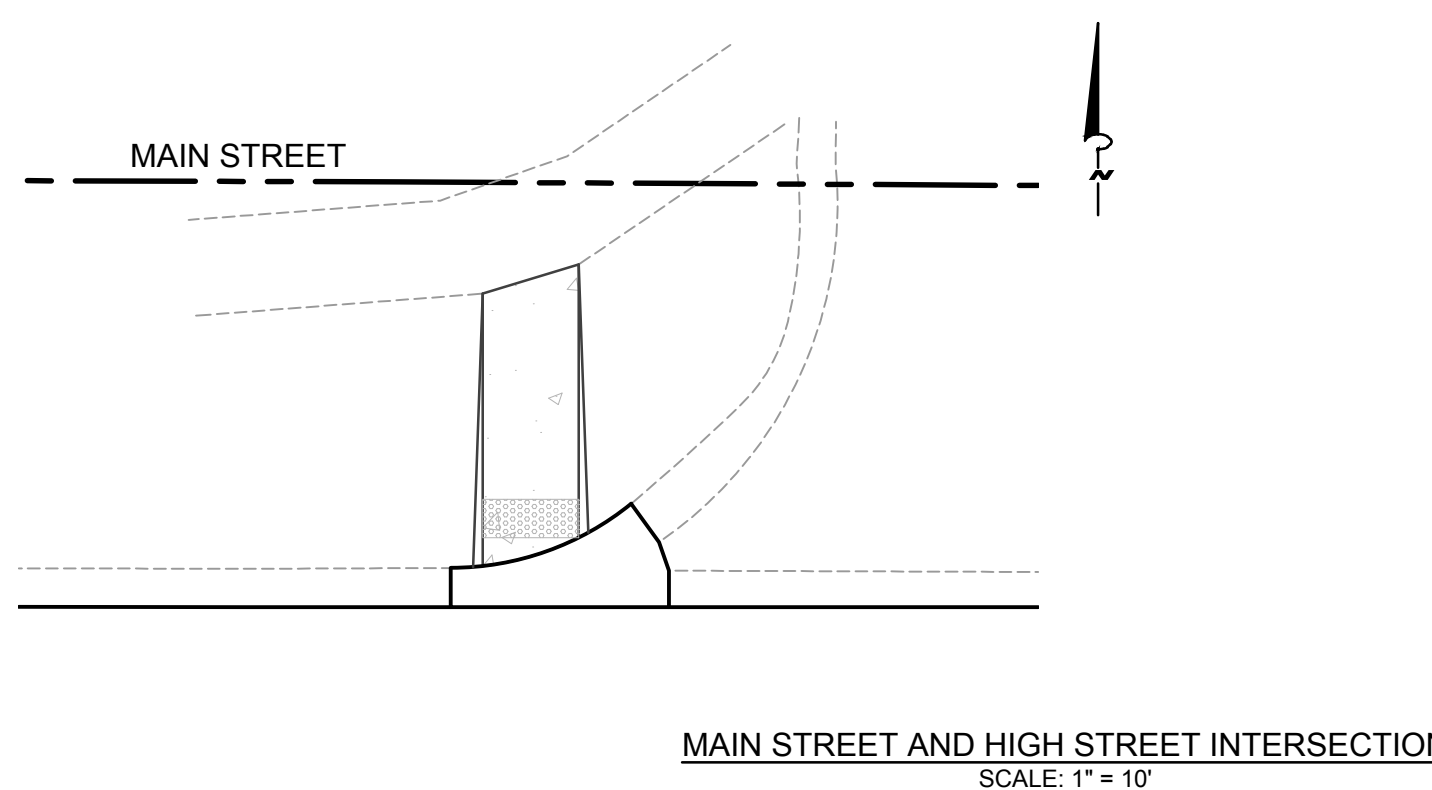
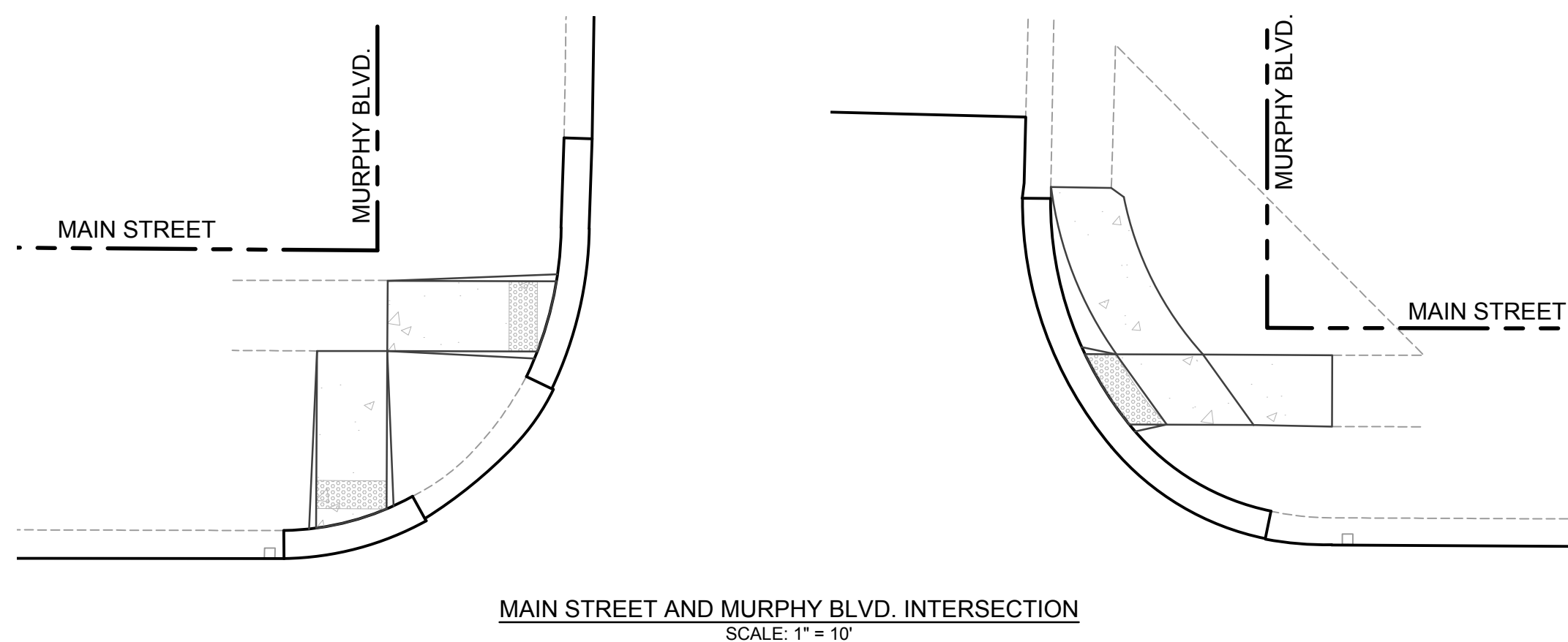
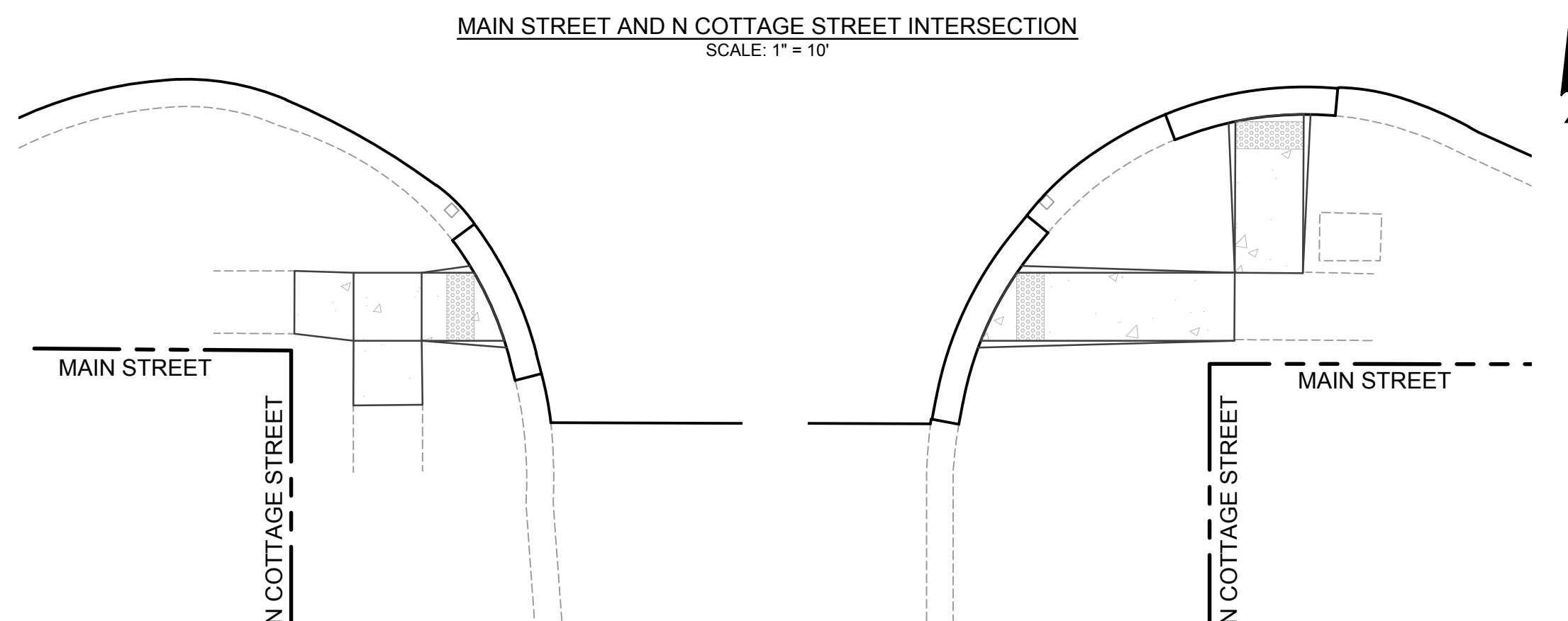
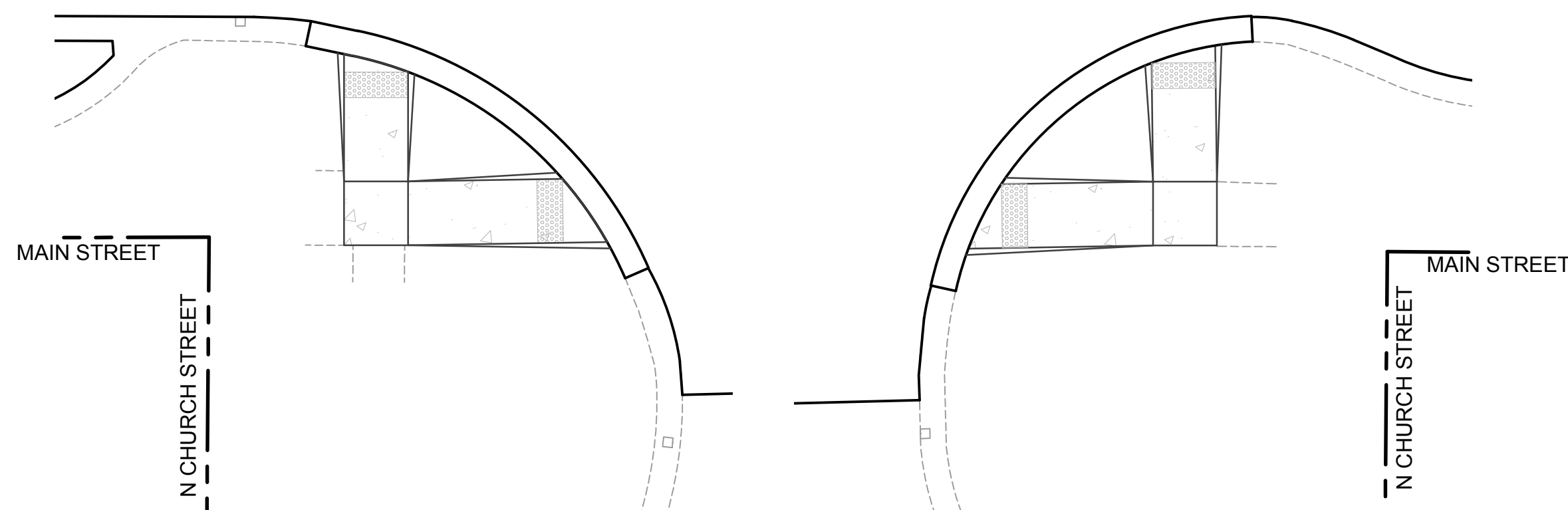
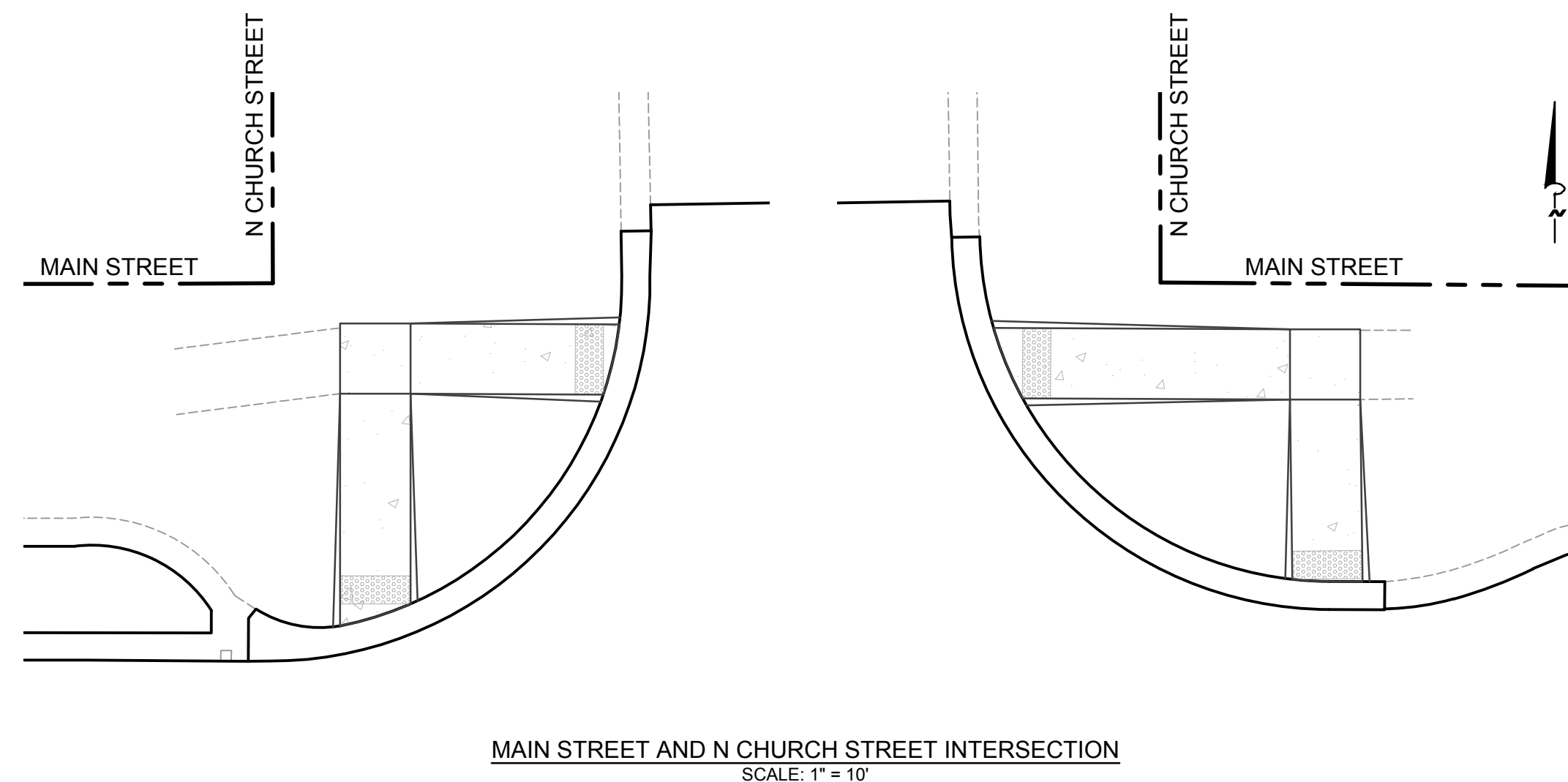
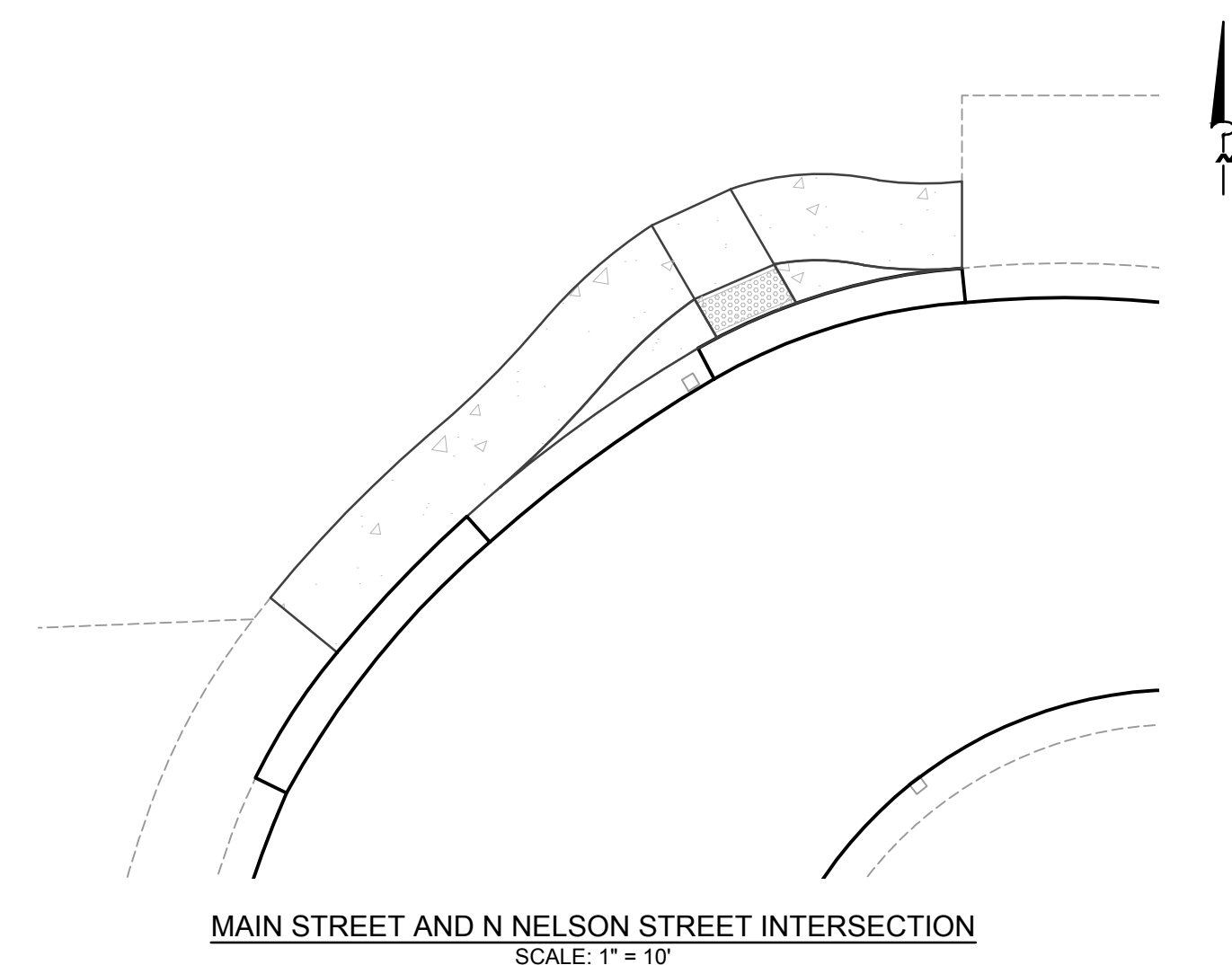
SAMUEL A. LEATCH
6201068854

PROJECT NAME:

MAIN STREET AND VERMONTVILLE HIGHWAY ROAD IMPROVEMENTS

CITY OF
POTTERVILLE

319 N. NELSON STREET
POTTERVILLE, MI 48876



00 11/01/2023
PRELIMINARY - NOT FOR
CONSTRUCTION

REVISIONS

P:\Kataravac\2343302 City of Potteryville - General Engineering\2025 Small
 Urban Project\FB Drawings\850 Urban CAD\2343302 SDB - Small Urban
 Project\2025.dwg C008 1/11/2023 1:18:59 PM
 THE REPRODUCTION, COPYING OR OTHER
 USE OF THIS DRAWING WITHOUT WRITTEN
 CONSENT IS PROHIBITED.
 © 2023 WIGHTMAN & ASSOCIATES, INC.

DATE: NOVEMBER, 2023

SCALE: 1" = 10'

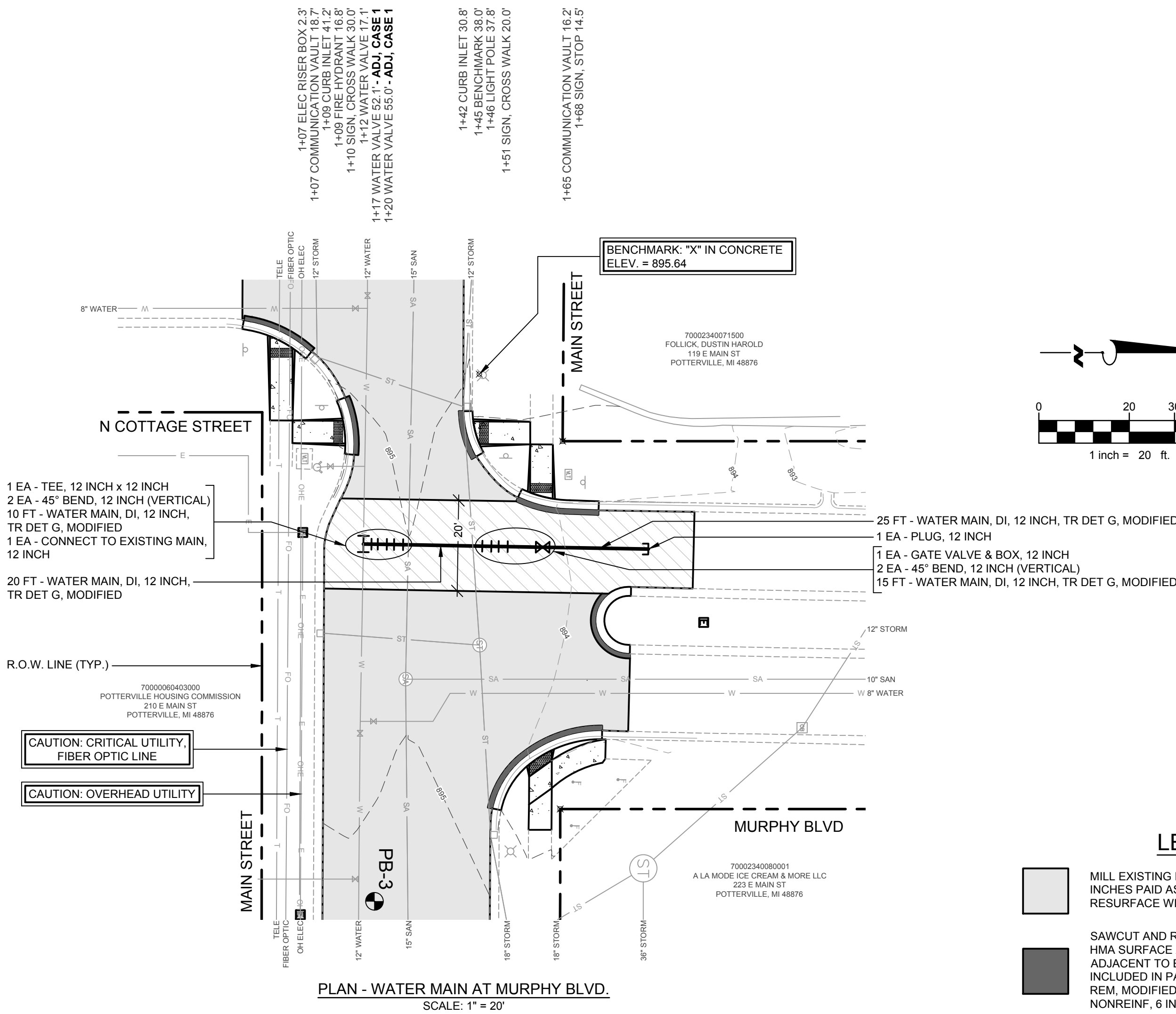
ADA RAMP GRADING DETAILS

JOB No. 215828

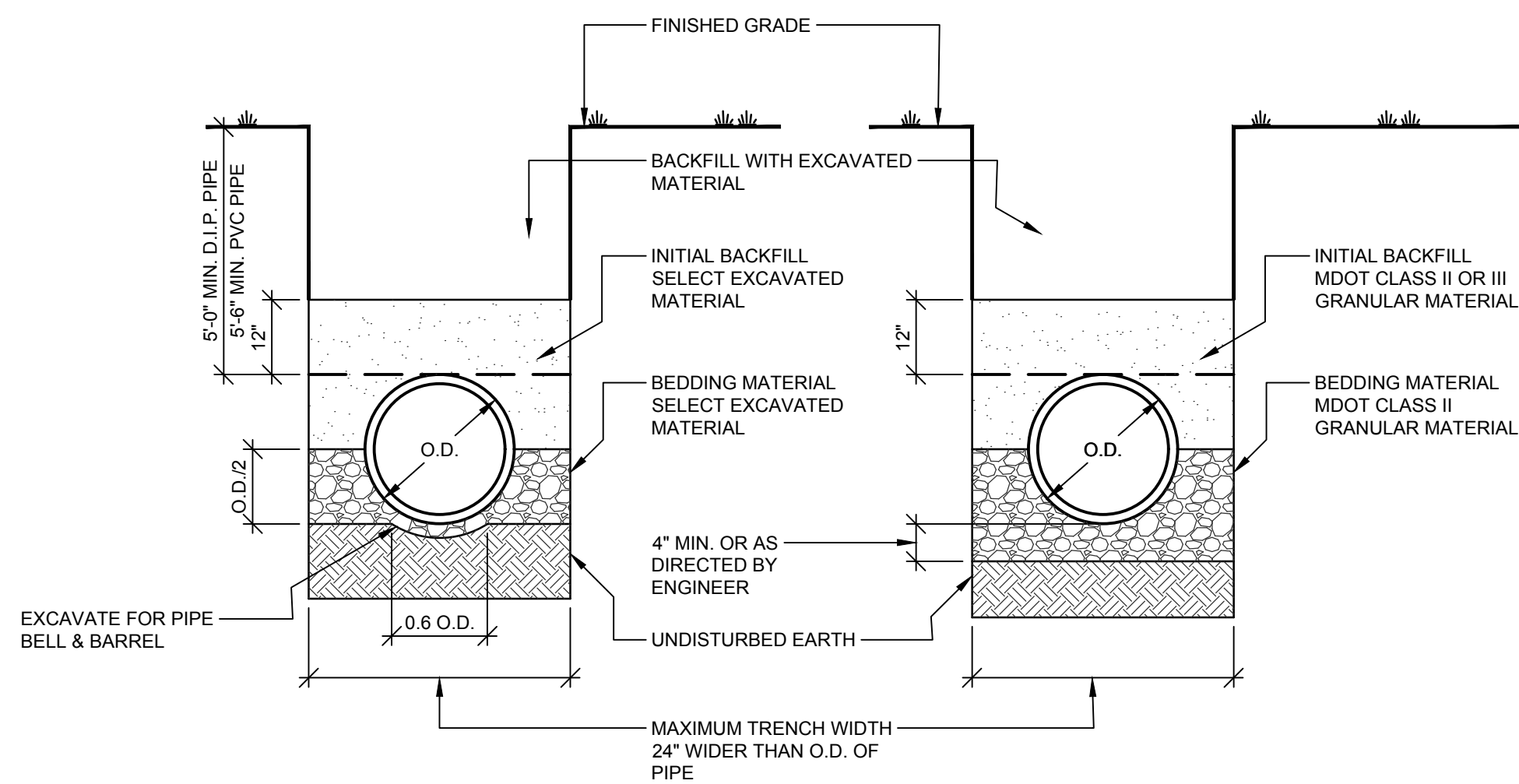
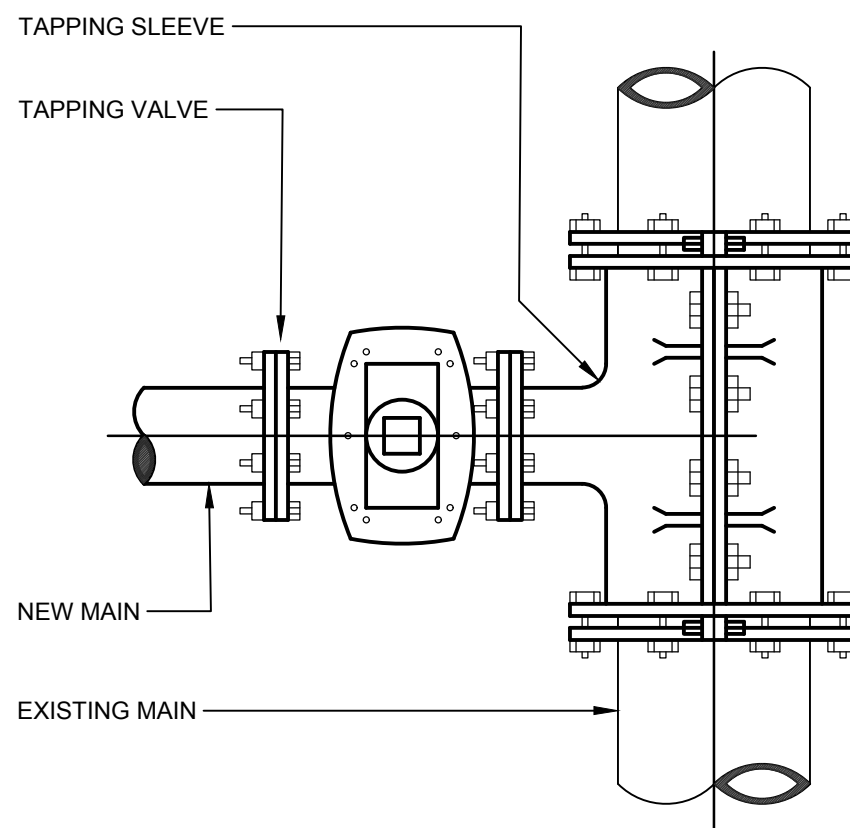
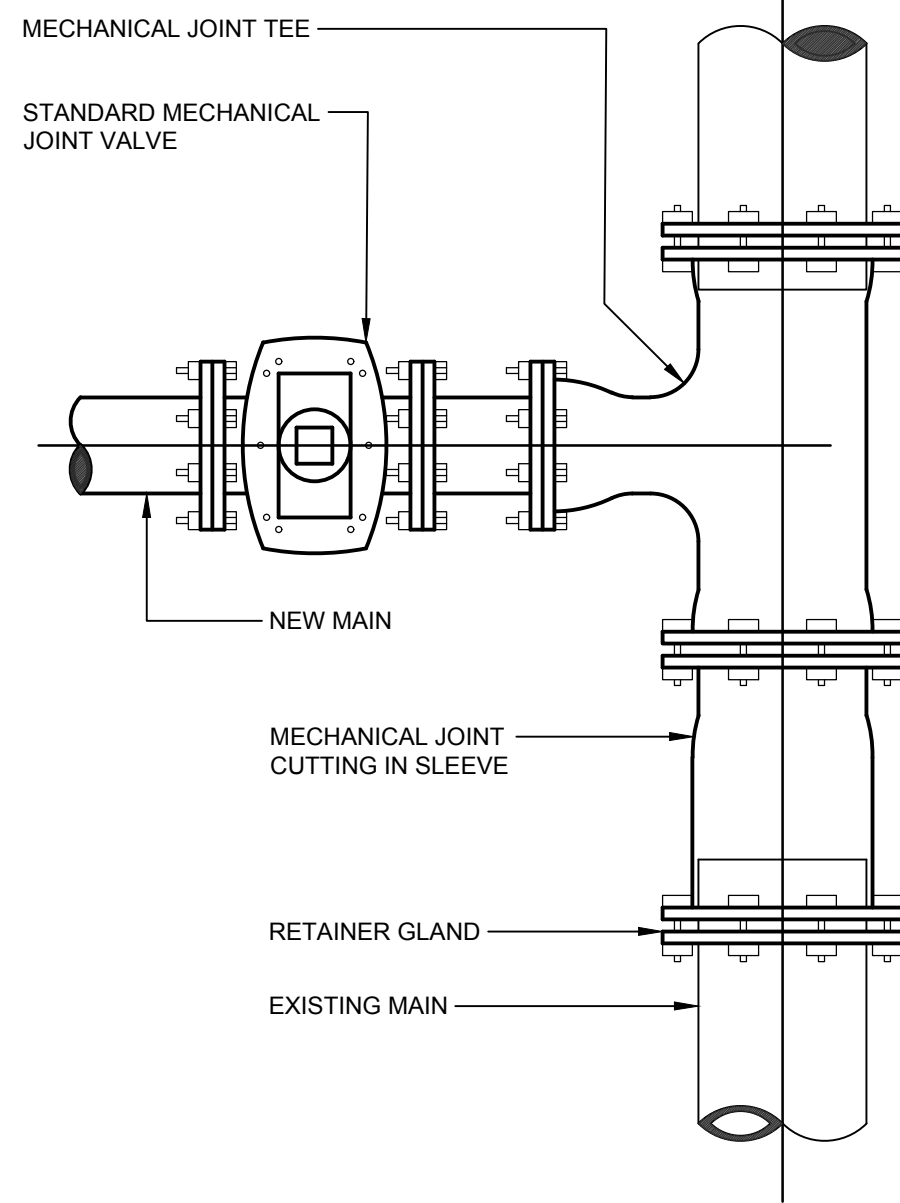
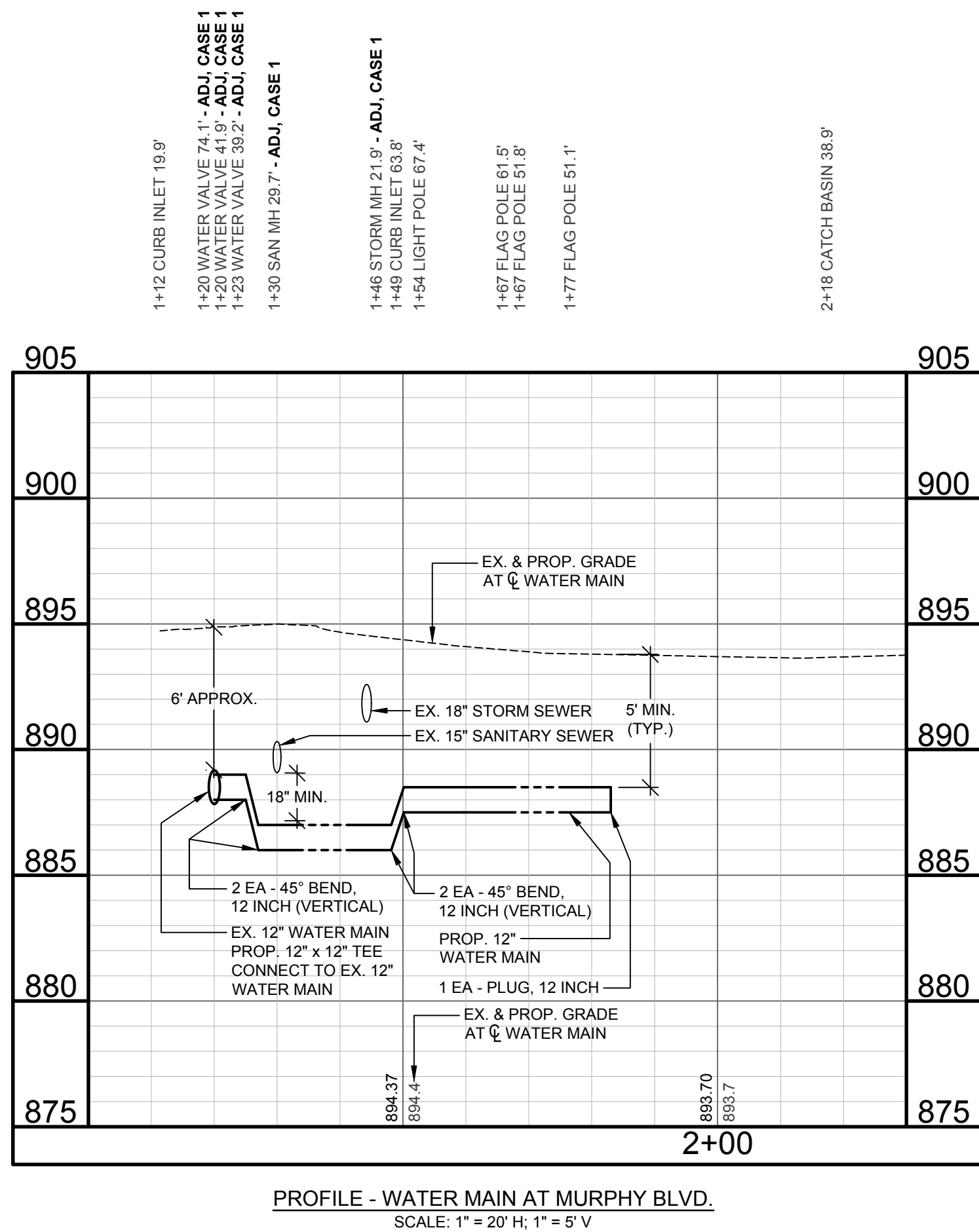
C008
OF 9

OF

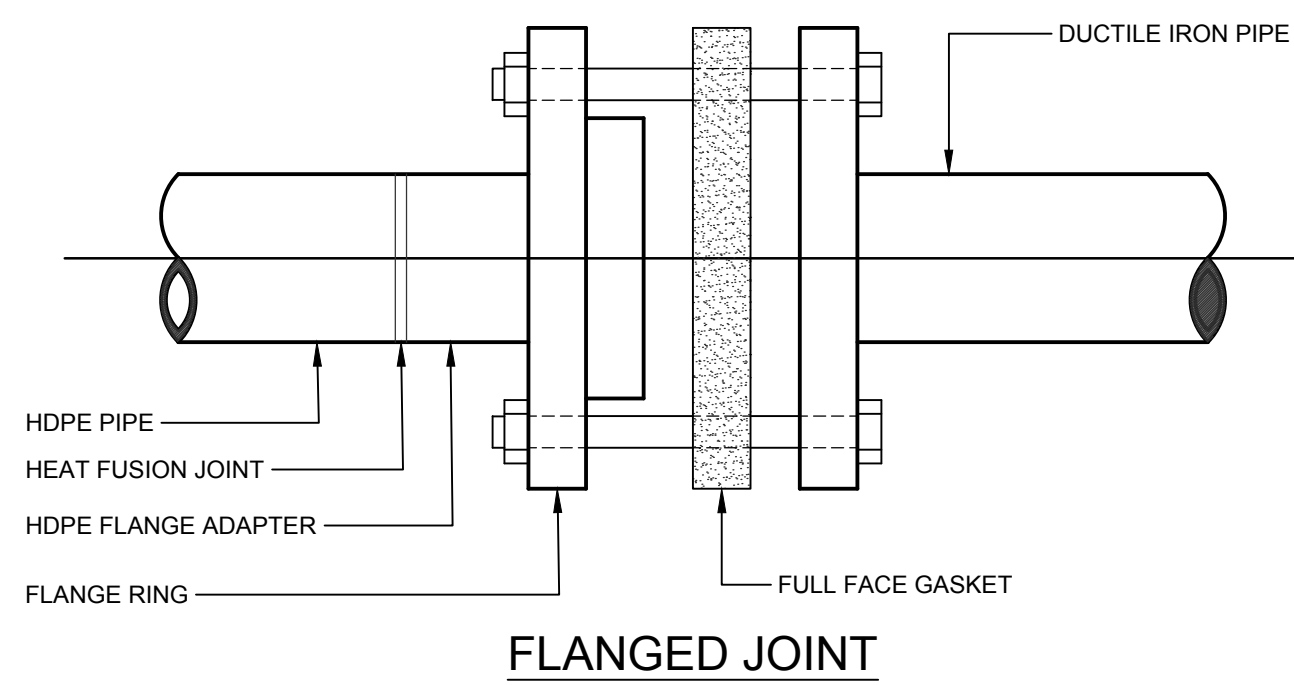
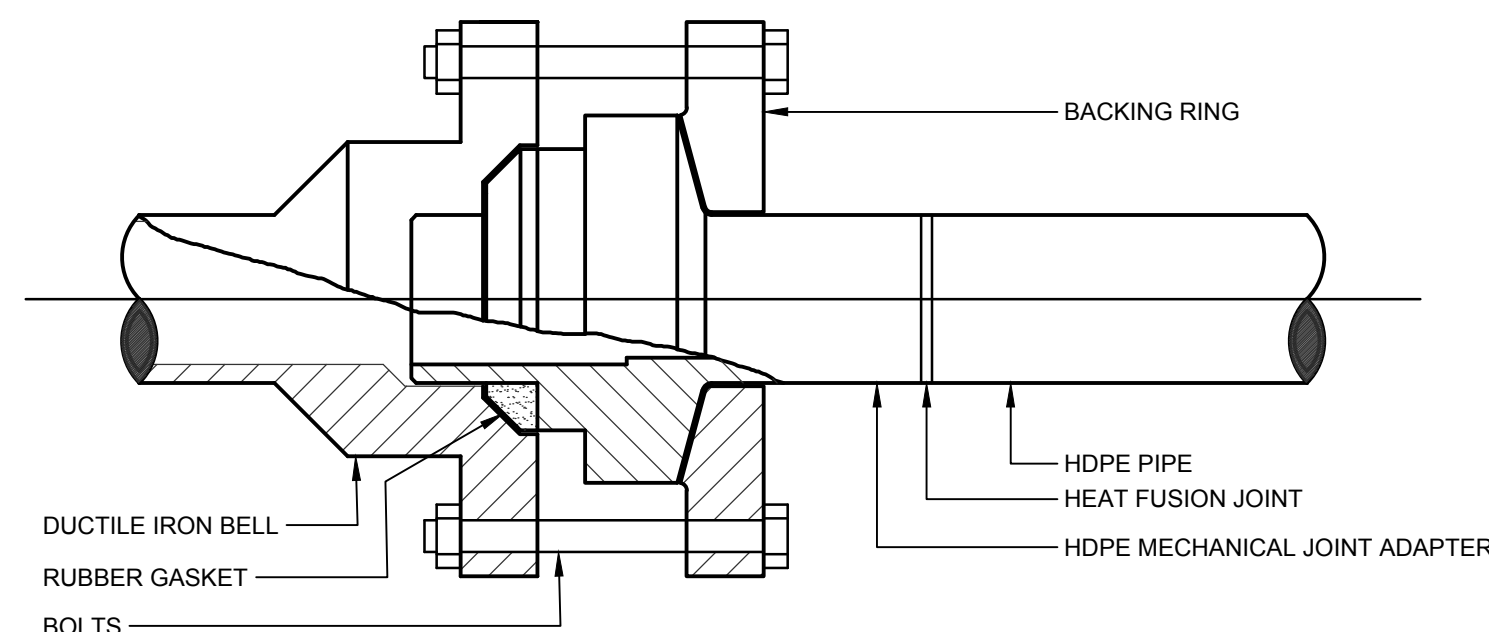
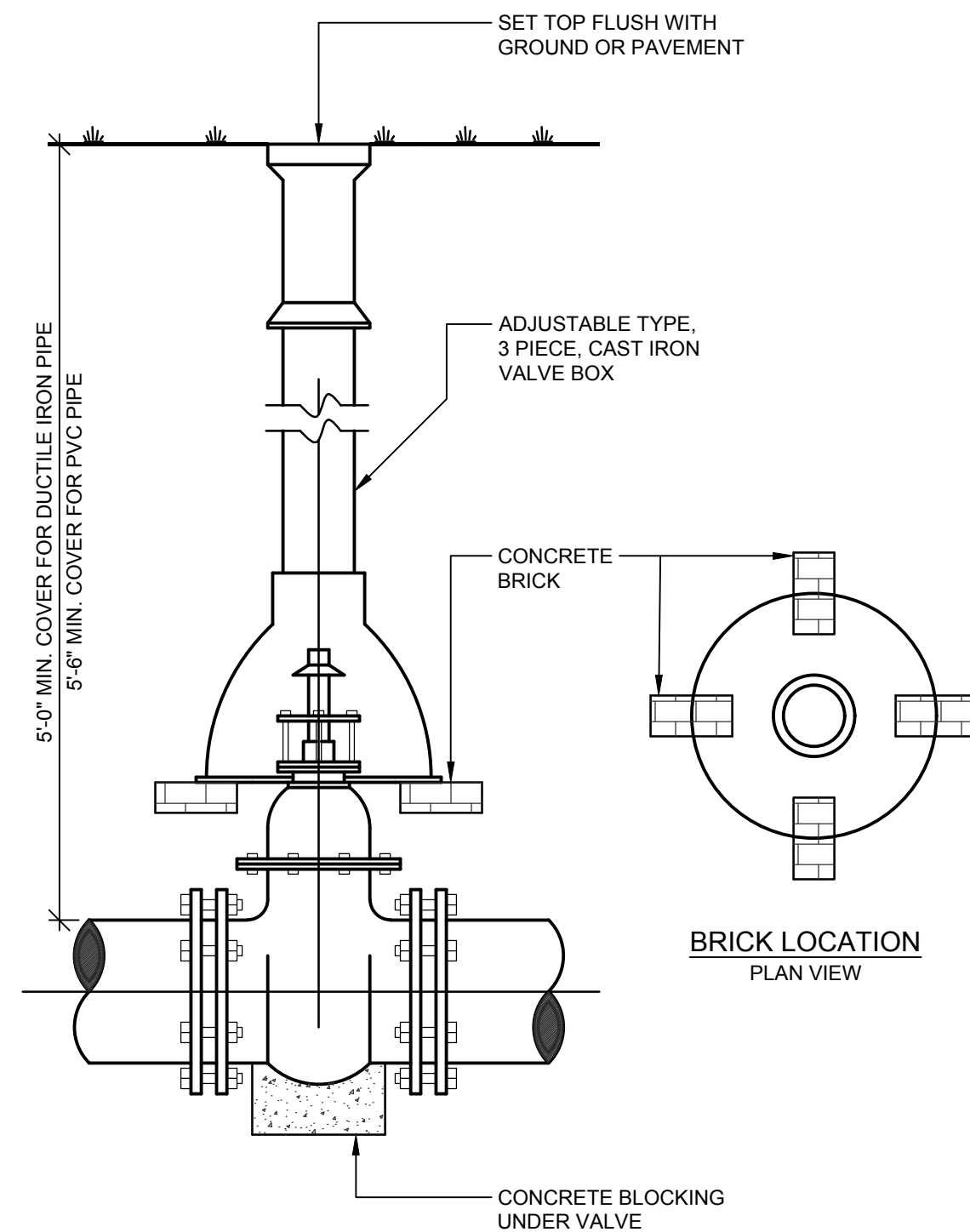
CONTROL SECTION NO. 23000 JOB NO. 215828



- LEGEND**
- MILL EXISTING HMA SURFACE TO A DEPTH OF 2 INCHES PAID AS COLD MILLING HMA SURFACE. RESURFACE WITH 220 #/SYD HMA, 5EL (TOP).
 - SAWCUT AND REMOVE FULL DEPTH EXISTING HMA SURFACE AT A UNIFORM WIDTH OF 1' ADJACENT TO EXISTING CURB AND GUTTER INCLUDED IN PAYMENT FOR CURB AND GUTTER, REM. MODIFIED. REPLACE WITH CONC BASE CSE, NONREINF, 6 INCH AND 220 #/SYD HMA, 5EL (TOP).
 - SAWCUT AND REMOVE FULL DEPTH EXISTING HMA SURFACE PAID AS HMA SURFACE, REM. REPLACE WITH SUBBASE, CIP (12 INCH MIN.), AGGREGATE BASE, 8 INCH, 220 #/SYD HMA, 5EL (LEVELING) AND 220 #/SYD HMA, 5EL (TOP).
 - SAWCUT AND REMOVE EXISTING SIDEWALK PAID FOR AS SIDEWALK, REM. INSTALL SIDEWALK, CONC, 4 INCH (6 INCH THROUGH DRIVES) AND CURB RAMP, CONC, 6 INCH
 - INSTALL DETECTABLE WARNING SURFACE AT ALL ADA RAMP SIDEWALK / CURB INTERFACES.



TRENCH DETAIL IN UNSUITABLE SOIL



WHERE THE WATER MAIN CROSSES A SEWER LINE THE WATER MAIN SHALL BE INSTALLED SUCH THAT THE NEAREST WATER MAIN JOINT IS 10' ON EITHER SIDE OF THE SEWER CROSSING.

