

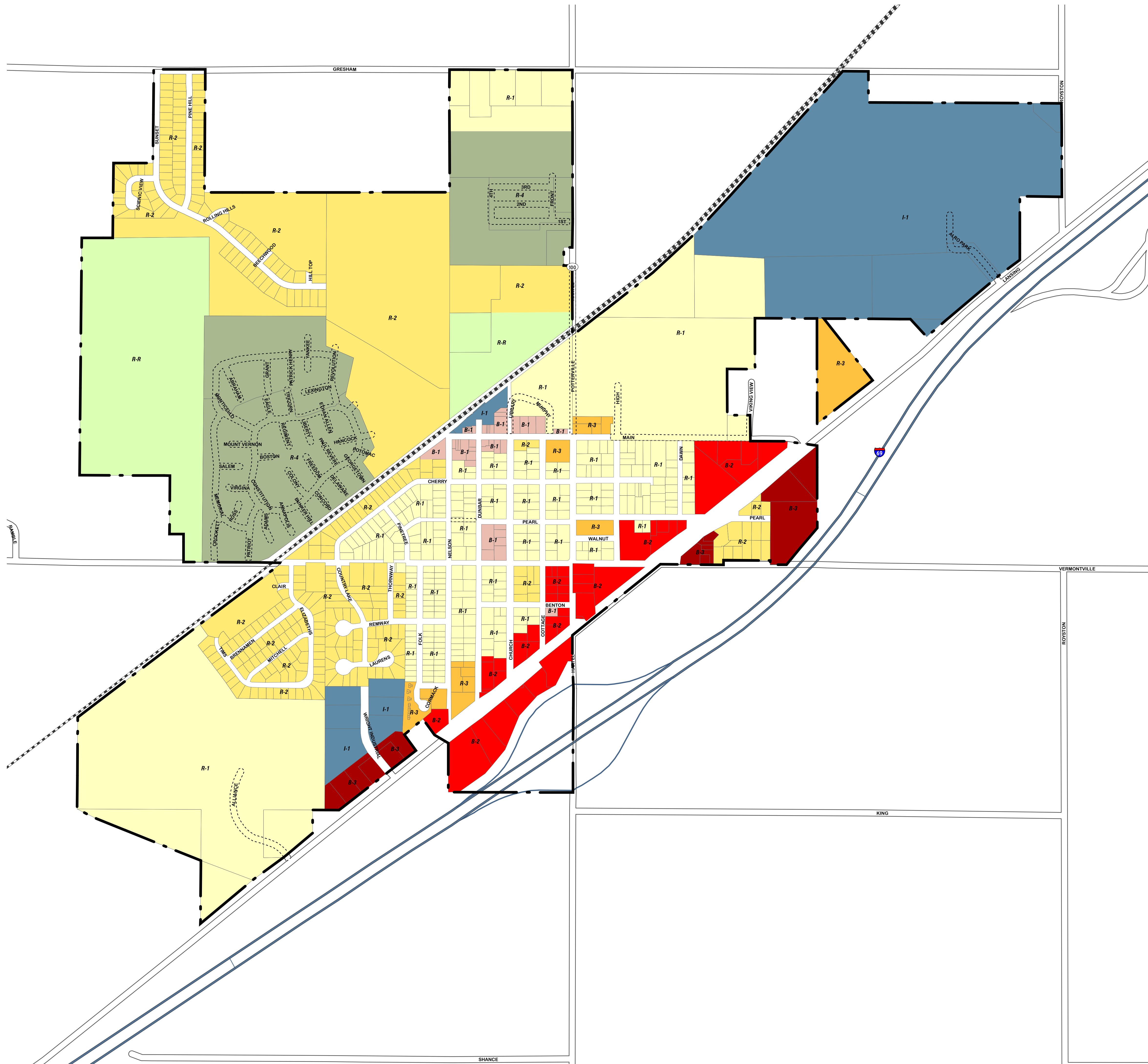
# City of Potterville

Eaton County, Michigan

## ZONING MAP

Effective date: February 2009

Adopted March 9, 1992  
Amended October 14, 1996  
Amended August 27, 1997  
Amended February 2009



-  R-R, Rural Residential
-  R-1, Low Density Residential
-  R-2, Medium Density Residential
-  R-3, High Density Residential
-  R-4, Mobile Home Park
-  B-1, General Business
-  B-2, Light Highway Business
-  B-3, General Highway Business
-  I-1, Light Industrial
-  Easements

1 inch = 500 feet



**williams&works**  
engineers | surveyors | planners



Data Sources: Michigan CGI, Eaton County GIS